

PROJECT 2-INSPIRE

Parent, Family, & Community Engagement

Collaboration • Motivation • Knowledge • Effective Communication



GOCABE.ORG/LEAD/



CABELEAD@GOCABE.ORG



(626) 814-4441 EXT. 214





CABE's Family Engagement Program, Project 2INSPIRE, is focused on implementing strong family and community engagement sessions that build leadership capacity and that value and draw upon community funds of knowledge to inform, support, and enhance teaching and learning for all students so that they can graduate college, career, and 21st century ready.

The Project 2INSPIRE Learning Continuum

Project 2INSPIRE is intentionally designed as a four-level leadership development pathway, with each level building on the previous one. Caregivers and community members progress from foundational understanding to advanced leadership, coaching, and mentoring roles.

Level 1: Awareness

Foundations of Family Engagement and Advocacy

Level 1 introduces families to the core beliefs and knowledge needed to engage confidently with schools. Participants explore the importance of family–school–community partnerships, emotional well-being, digital citizenship, educational pathways, and the California public education system. This level centers families' strengths while building awareness, confidence, and foundational advocacy skills that support student success.

Level 2: Mastery

Emerging Leaders

Level 2 expands families' understanding and positions them as emerging leaders. Participants deepen their knowledge of digital equity, multilingual education, academic programs, postsecondary pathways, and shared decision-making structures. Families strengthen their ability to navigate school systems, ask informed questions, and advocate collectively for equitable opportunities within their schools and districts.

Level 3: Expert

Family Leadership and Facilitation

Level 3 marks the transition from participant to leader and facilitator. Families engage in intensive leadership development focused on facilitation skills, communication, reflection, and collaborative problem-solving. Participants learn to design and lead workshops, support other families, and apply Community Learning Theory in real contexts. This level emphasizes practice, feedback, and reflection as families step into visible leadership roles within their school communities.

Level 4: Parent-Led Delivery + CABE Coaching

Collective Impact

The Parent-Led Delivery and CABE Coaching level is a licensing and implementation model designed for sustainability and scale. CABE provides the Project 2 Inspire Level 1 content for district use, and parent leaders facilitate the sessions locally. To ensure quality and consistency, a CABE specialist supports the parent facilitators through four coaching sessions, offering guidance on facilitation strategies, engagement routines, and implementation planning. This model builds internal capacity, strengthens family leadership, and allows districts to deliver CABE-aligned family learning experiences with ongoing support.

A Pipeline for Sustainable Family Leadership

Together, the four levels of Project 2INSPIRE create a coherent, strengths-based leadership pipeline. Families are not only engaged, they are prepared, empowered, and positioned to lead alongside educators and administrators. When families are supported as partners and leaders, schools are transformed, students thrive, and communities grow stronger.

LEVEL

01

Awareness

Foundations of Family Engagement

Awareness • Confidence • Connection

Mastery

Emerging Leaders

Advocacy • Shared Decision-Making

LEVEL

02

PROJECT 2-INSPIRE

LEVEL

04

Parent-Led Delivery

Collective Impact

CABE Coaching • Leadership • Sustainability

Expert

Family Leadership & Facilitation

Communication • Collective Learning

LEVEL

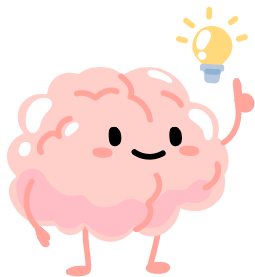
03

Project 2INSPIRE Level 1: Awareness

Module	Title	Key Area of Focus
1	Strengthening Family Communication and Engagement to Support Every Student's Academic Success	<ul style="list-style-type: none"> • Understanding the Community Learning Theory and the Unity Principle • Exploring the importance and levels of family and community engagement • Examining the impact of family, school, and community communication • Who is CABE and how do we support this work?
2	Empowering Families and Caregivers in the Digital World	<ul style="list-style-type: none"> • Parenting in the digital age • How technology supports learning and daily life • "Digital Kids vs. Analog Parents": bridging strengths across generations • Key statistics every family should know • Most popular social media platforms, apps, and games • Benefits and possibilities of Information and Communication Technologies (ICTs) • Family-centered recommendations for safe, healthy, and balanced technology use
3	Strong Minds, Calm Hearts: Supporting Emotional Growth	<ul style="list-style-type: none"> • Learn effective strategies for managing stress • Explore ways to support and regulate intense emotions • Encourage self-control in challenging situations
4	Starting the Path to Success Now: Opportunities Beyond High School	<ul style="list-style-type: none"> • The importance and value of a university education • How to prepare for college (academically and personally) • Educational options in California (university, community college, career pathways, etc.) • Understanding and completing FAFSA • Exploring opportunities beyond high school with confidence

Project 2INSPIRE Level 1: Awareness (continued)

Module	Title	Key Area of Focus
5	The California Public School System and Student Evaluations	<ul style="list-style-type: none"> • Structure of the U.S. and California public school systems • Key school legislation that impacts students and families • How accountability systems work in California • What ESSA (Every Student Succeeds Act) means for students • How schools and student learning are evaluated
6	The CA English Learner Roadmap Policy	<ul style="list-style-type: none"> • Advantages of being bilingual and biliterate • The California English Learner Roadmap • Global California 2030 and multilingual goals • The State Seal of Biliteracy • The Local Control Accountability Plan (LCAP) and English Learner supports
7	Exploring Academic Pathways and Opportunities (PK–12)	<ul style="list-style-type: none"> • Right to a quality education • Overview of academic pathways (PK–12) • Access to instructional programs at your school • Equitable learning opportunities for all students
8	Family Leadership in School Committees and Goal Setting	<ul style="list-style-type: none"> • Parent committees in schools and their roles in decision-making • Strategies for effective and inclusive committees • Parents as leaders and agents of change • Developing SMART goals and action plans to guide school improvement



Awareness

Foundations of Family Engagement

Awareness • Confidence • Connection

LEVEL

01

Project 2INSPIRE Level 2: Mastery

Module	Title	Key Area of Focus
1	The Power of Family Involvement: Strengthening Partnerships Between Home, School, and Community	<ul style="list-style-type: none"> • Community Learning Theory and the Unity Principle • Deepening family engagement as shared responsibility • Family advocacy and leadership opportunities • Strengthening communication across home, school, and community • CAFE's role in supporting family leadership and systems change
2	Closing the Digital Gap: Equity, Access, and Responsible Technology Use	<ul style="list-style-type: none"> • Understanding and reducing the digital divide • Promoting equitable access to technology and digital knowledge • Exploring the benefits and challenges of artificial intelligence in education • Strategies to support safe, responsible, and balanced technology use • Family advocacy for digital equity
3	Strong Minds, Healing Hearts: Emotional Awareness and Personal Growth	<ul style="list-style-type: none"> • Understanding negative thought patterns and internal dialogue • Strategies for emotional awareness and self-reflection • Building resilience and emotional well-being • Supporting personal growth for adults and children
4	Pathways to Success: Preparing for Opportunities Beyond High School	<ul style="list-style-type: none"> • The value of higher education and career pathways • Academic and personal preparation for postsecondary options • Exploring California's educational pathways • Financial planning and financial aid basics

Project 2INSPIRE Level 2: Mastery (continued)

Module	Title	Key Area of Focus
5	Understanding California's Public Education System and Student Evaluations	<ul style="list-style-type: none"> • School governance and educational systems • Structure of the U.S. and California public education systems • Key education legislation impacting students and families • Accountability systems: LCFF, LCAP, and ESSA • Student assessments and evaluations
6	Supporting Multilingual Learners and Bilingual Pathways	<ul style="list-style-type: none"> • English Language Development (ELD) programs • Understanding ELPAC and language development assessments • Foundations of dual language and dual immersion programs • Benefits and shared goals across multilingual programs • Overview of Spanish Common Core State Standards
7	Exploring Academic Programs and Equitable Opportunities (PK–12)	<ul style="list-style-type: none"> • The right to a quality education • Overview of academic programs and pathways (PK–12) • Access to instructional programs at school sites • Equity and inclusion in academic opportunities
8	Family Leadership in School Committees and Goal Setting	<ul style="list-style-type: none"> • Parent committees and shared decision-making • Strategies for building effective and inclusive committees • Families as leaders and change agents • Developing SMART goals and action plans



Mastery

Emerging Leaders

Advocacy • Shared Decision-Making

LEVEL

02

Project 2INSPIRE Level 3: Expert

Module	Title	Key Area of Focus
1	Community Learning Theory: Foundations for Family Leadership	<ul style="list-style-type: none"> Goals and outcomes of the Project 2INSPIRE Family Leadership Development Program Deepening understanding of Community Learning Theory and the Unity Principle Applying Community Learning Theory in leadership and facilitation contexts Mobilizing individual and collective wisdom within a learning community
2	Achieving Success: Mindset, Reflection, and Growth	<ul style="list-style-type: none"> Reflecting on learning from Levels 1 and 2 Defining personal and collective attributes of success Understanding decision-making, boundaries, and intentional choices Developing strategies to navigate challenges and obstacles
3	Leadership in Action: Qualities, Skills, and Responsibility	<ul style="list-style-type: none"> Exploring leadership identities and styles Identifying personal leadership strengths and areas for growth Modeling responsibility, accountability, and ethical leadership Demonstrating leadership in family, school, and community settings
4	Developing Skills as a Facilitator: Leading Learning Together	<ul style="list-style-type: none"> Building and sustaining collaborative work teams Understanding the facilitation process in community learning spaces Using facilitation strategies for effective meetings and workshops Elements of engaging and effective presentations

LEVEL

03

Expert

Family Leadership & Facilitation
Communication • Collective Learning



Project 2INSPIRE Level 3: Expert (continued)

Module	Title	Key Area of Focus
5	Building Our Teaching and Coaching Capacity	<ul style="list-style-type: none"> • Strengthening group learning and collaboration • Applying facilitation strategies in teaching and coaching contexts • Designing learning experiences for adult audiences • Supporting others through guidance, modeling, and reflection
6	Achieving Impact: Presentations, Motivation, and Problem-Solving	<ul style="list-style-type: none"> • Designing and delivering effective presentations • Strategies to motivate and engage participants • Navigating conflict and challenging situations • Recruiting and engaging families for workshops and meetings • Planning and preparation for impactful presentations
7	Becoming Exceptional Facilitators: Practice, Feedback, and Reflection	<ul style="list-style-type: none"> • Preparing for facilitation and presentations • Applying Community Learning Theory in practice • Using multiple facilitation strategies effectively • Giving and receiving feedback to strengthen facilitation skills • Engaging in self-reflection to support continuous improvement
2 - 4 Sessions	Parent Cohort Presentations	<ul style="list-style-type: none"> • Participants present assigned Modules (1–6) to fellow cohort members • Engage in structured peer feedback • Participate in reflection and collaborative refinement • Practice and confidence-building space
Final	Celebration and Graduation: Leading Forward	<ul style="list-style-type: none"> • Reflection on leadership growth and learning • Setting personal, academic, and community leadership goals • Applying leadership skills to school and community contexts • Celebrating accomplishments and next steps

Project 2INSPIRE Level 4: Parent-led Delivery + CABE Coaching Overview

Module	Key Area of Focus
4-6 Sessions CABE Licensing	<ul style="list-style-type: none"> • Family-Led Project 2INSPIRE modules • Collaborative presentation and co-facilitation • Peer feedback and collective reflection • Strengthening confidence and leadership presence • CABE Coach Support

LEVEL
04

Parent-Led Delivery

Collective Impact

CABE Coaching • Leadership • Sustainability



For over 50 years, CABE has championed the strengths of multilingual, multicultural, and racially diverse communities.

LEARNING

ENGAGEMENT

ADVOCACY

DEVELOPMENT

Customized professional learning to build culturally and linguistically sustaining classrooms.

Workshops that empower parents and families to become strong advocates for their children.

Professional Learning Services

Family and Community Engagement

CABE 's LEAD Educational Solutions

Customized Content Planning FAQs

LEADing with the Collective Strengths
of Educators, Families, Students, and Communities for Transformative Impact.

Frequently Asked Questions (FAQs):

- **Content:**

- **Q:** Can the content be customized to our needs?
- **A:** Yes, you can choose the entire series, a specific module, or individual sessions from our existing content. We can adapt our material to align with your desired outcomes.

- **Audience:**

- **Q:** Who can participate in these sessions?
- **A:** Families and community members, as well as site or district administrators, TOSAs, classroom teachers, ELD teachers, dual language teachers, and paraeducators, can all participate.
- **Q:** Is a specific experience level required?
- **A:** No, we cater to all experience levels and can adapt the sessions to meet participants where they are.

- **Language of delivery:**

- **Q:** In what languages can the sessions be delivered?
- **A:** Sessions can be delivered in English and/or Spanish.

- **Sessions:**

- **Q:** If we choose multiple sessions, will they be standalone or a series?
- **A:** Our services are customizable, and we can deliver standalone sessions or a cohort-based series.
- **Q:** How long is each session?
- **A:** Session lengths vary, and we are flexible and can adapt to your scheduling needs.

- **Scheduling:**

- **Q:** How early should I schedule my sessions?
- **A:** We recommend scheduling as soon as possible to ensure availability, and we can hold up to two dates per session for you.

- **Platform for delivery of services:**

- **Q:** Do you offer virtual options?
- **A:** Yes, we offer in-person, virtual, and hybrid sessions.





**LEADING with the Collective Strengths
of Educators, Families, Students, and Communities for Transformative Impact**

LEARNING

ENGAGEMENT

ADVOCACY

DEVELOPMENT

**EXPLORE WHAT'S POSSIBLE WITH
CABE'S LEAD EDUCATIONAL SOLUTIONS!**

-  gocabe.org/lead/
-  gocabe.org/community_schools/
-  cabelead@gocabe.org
-  (626) 814-4441 ext. 214

