

Language in Bloom Series

Cultivating Success for Multilingual English Learners



THREE LIVE VIRTUAL MODULES

3:30 pm – 5:30 pm

- Choose from three stand-alone virtual modules
- Selected Thursday afternoons during the 2025-2026 school year
- The content for each module will be presented over two days
- Presented by key CABE LEAD specialists, experts in English language development and academic language development
- Customized scheduling available for your school or district

Culturally and Linguistically Responsive Instruction

March 12 & March 19

Universal Design for Learning (UDL) and English Language Development

April 2 & April 9

Focused Support for Multilingual/Long-Term English Learners

May 7 & May 14

OFFERED AT THE LOW COST OF

**\$205 PER MODULE
OR
\$550 FOR ALL THREE!**

REGISTRATION NOW OPEN!
bit.ly/ELDspring2026

For more information, please contact:

Rubí Flores, LEAD Director

Natalie Núñez, LEAD Assistant Director

 **626-814-4441**

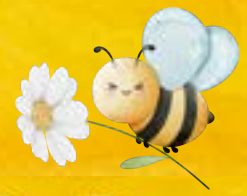
 **cabelead@gocabe.org**

 **gocabe.org/lead/**



Language in Bloom Series

Cultivating Success for Multilingual English Learners



THREE LIVE VIRTUAL MODULES

3:30 pm – 5:30 pm

Culturally and Linguistically Responsive Instruction

March 12 & March 19

In this session, educators will explore strategies for creating inclusive classrooms that honor students' cultural and linguistic identities while advancing language development and academic achievement. Participants will learn how to connect instruction to students' lived experiences, scaffold rigorous content, and foster engagement through culturally and linguistically responsive practices.

Universal Design for Learning (UDL) and English Language Development

April 2 & April 9

In this session, participants will explore how Universal Design for Learning (UDL) principles intersect with effective English Language Development (ELD) strategies to support multilingual learners, including those who are dually identified. Through interactive activities, sample lessons, and reflection, participants will learn how to design inclusive learning environments that honor students' linguistic and cultural assets, differentiate instruction, and promote equitable access to learning for all. By the end, participants will have developed a deeper understanding on how UDL can be used to specifically support multilingual learners and strategies they can use in their classroom.

Focused Support for Multilingual/Long-Term English Learners

May 7 & May 14

In this session, participants will learn effective strategies for scaffolding rigorous academic content, accelerating the development of academic vocabulary, and embedding language development across the curriculum. Through interactive online discussions and collaborative activities, educators will gain practical tools to design instruction that builds both academic language and content knowledge. The session will also highlight ways to integrate designated and integrated ELD with grade-level texts and tasks, increase student engagement through culturally and linguistically responsive scaffolding, and use formative assessment data to identify and address language and literacy gaps.

For more information, please contact:

Rubí Flores, LEAD Director

Natalie Núñez, LEAD Assistant Director



626-814-4441



cabelead@gocabe.org



gocabe.org/lead/

