

*Click the images above for free teaching resources.*

### Important Upcoming CABE Dates and Deadlines

- **October 13**—Deadline for [Seal of Excellence School Award](#) applications
- **October 10 & 17**—[ELDTA Modules 2A & 2B](#): Module 2: Strategic Planning of Integrated English Language Development in the Content Areas
- **October 26**—[DLTA Module 2](#): Best Practices in dual Language Education | Las mejores prácticas para la educación en dos idiomas
- **October 27**—Deadline to submit CABE 2025 [commercial workshop proposals](#)
- **October 29**—[CABE Bakersfield Parent & Paraeducator Conference](#)

*Find out what happening in Sacramento that impacts education...*



### CABE Legislative Advocate Report

by Jennifer Baker

- CABE Co-sponsored Bill Update
- Remaining Legislative Calendar
- CABE Bill Update
- Growth Expands into the Fall

[Read Report](#)

[View/Download AB 2074 Press Release](#)

*Don't wait! The window to apply is closing soon!*

# DEADLINE APPROACHING SOON!

## CABE 2025 SEAL OF EXCELLENCE SCHOOL AWARD NOMINATION



Deadline to Submit Nomination:  
**October 13, 2024 - 11:59 pm PST**

**SUBMIT NOMINATION NOW!**



*Upcoming professional learning opportunities....*



CALIFORNIA ASSOCIATION FOR BILINGUAL EDUCATION

SCHOOL  
YEAR  
2024-2025

PROFESSIONAL LEARNING FOR TEACHERS, COACHES, AND ADMINISTRATORS OF  
PRE-K TO 12TH SPANISH DUAL LANGUAGE AND BILITERACY PROGRAMS



Virtual  
Series

## DUAL LANGUAGE TEACHER ACADEMY (DLTA) PROGRAM

**REGISTRATION NOW OPEN!**

**CLICK FOR MORE  
INFORMATION**





**CALIFORNIA ASSOCIATION FOR BILINGUAL EDUCATION**

**SCHOOL YEAR  
2024-2025**

**PROFESSIONAL LEARNING FOR TEACHERS AND ADMINISTRATORS OF  
PRE-K TO 12TH GRADE ENGLISH LEARNERS AND EMERGENT BILINGUALS**

## **CABE ENGLISH LANGUAGE DEVELOPMENT TEACHER ACADEMY (ELDTA)**



**VIRTUAL  
SERIES**

**ALL THURSDAY EVENTS**  
**September 2024 through May 2025**  
**3:30pm - 5:30pm (PST)**

**CLICK HERE TO  
VISIT OUR WEBSITE**

*Join us in Bakersfield on October 29th...*

# Registration for the CABE Bakersfield Parent & Paraeducator Conference is Now Open!



CALIFORNIA ASSOCIATION FOR BILINGUAL EDUCATION

School Year  
2024–2025

PROFESSIONAL LEARNING FOR PARENTS AND PARAEDUCATORS  
OF PRE-K TO 12 GRADE ENGLISH & MULTILINGUAL LEARNERS

## CABE ONE-DAY PARENT & PARAEDUCATOR CONFERENCE

A Vision for Biliteracy & Educational Excellence for English Learners and Multilingual Learners

# BAKERSFIELD, CA

## TUESDAY, OCTOBER 29, 2024

Bakersfield Marriott at the Convention Center | 801 Truxtun Avenue, Bakersfield, CA, 93301

### Parents & Paraeducators Regional: Supporting Learners, and Strengthening Communities

Are you ready to embark on a transformative journey in the world of education? Look no further! Join us for a power-packed day at CABE's extraordinary one-day conference designed exclusively for parents and paraeducators.

### KEYNOTE SPEAKER



**JO  
GUSMAN**

**Edu-Trainer, New Horizons  
in Education**

Opening General Session  
8:00 am - 9:00 am

### EARLY REGISTRATION

**\$200**

(\$225 after October 17, 2024)

Lunch and materials are included.

District Special:

Send six (6), Pay for five (5)!

(All six registrations must be received together)

Convention Center Parking: **\$10**

**REGISTER TODAY!**

*Submit a workshop proposal for our regional conferences...*



**PROFESSIONAL LEARNING FOR PARENTS AND PARAEDUCATORS  
OF PRE-K TO 12TH GRADE ENGLISH & MULTILINGUAL LEARNERS****Interested in Presenting at our CABE Parent  
and Paraeducator Regional Conferences?**

*Share your educational knowledge!*

CABE invites you to submit a presentation highlighting the latest resources, strategies, and programs that support English and Multilingual learners, specifically tailored for Parents and Paraeducators.



[Click Here to Submit](#)

*CABE 2025 registration opening soon! Click below to learn more...*

CALIFORNIA ASSOCIATION FOR BILINGUAL EDUCATION

**cabe50<sup>th</sup>2025**  
ANNIVERSARY

Honoring Our Past, Embracing Our Future: 50 Years of Bilingual Advocacy & Excellence

**March 26-29, 2025 | Long Beach Convention Center**

CALIFORNIA ASSOCIATION FOR BILINGUAL EDUCATION

# CABE 50<sup>th</sup> 2025

ANNIVERSARY

Honoring our Past, Embracing Our Future: 50 Years of Bilingual Advocacy & Excellence

**Long Beach, CA | March 26-29, 2025**



## AWARD NOMINATIONS

**SUBMISSION DEADLINE:**

DECEMBER 6, 2024

**SEAL OF EXCELLENCE SCHOOL  
SUBMISSION DEADLINE:**

OCTOBER 13, 2024

### CATEGORIES:

ADMINISTRATOR OF THE YEAR

TEACHER OF THE YEAR

PARAEDUCATOR OF THE YEAR

PARENT OF THE YEAR

STUDENT WRITING

SEAL OF EXCELLENCE SCHOOL

Join us in LONG BEACH! [WWW.CABE2025.ORG](http://WWW.CABE2025.ORG)  
REMEMBER TO STAY CONNECTED WITH CABE





CALIFORNIA ASSOCIATION FOR BILINGUAL EDUCATION



## REGISTER TO BE A SPONSOR OR EXHIBITOR



- DEDICATED VIEWING TIMES
- PRIME SPONSOR LOCATIONS
- GIVEAWAYS & RAFFLES
- LEADCAPTURE
- 5,000 PLUS ATTENDEES

**REGISTER TODAY!**

## SPONSOR & EXHIBITOR OPPORTUNITIES!

- ★ **Purchase Pre-Registration List for ONLY \$175.**  
(Attendees who have given permission to share their information)
- ★ **Opportunity to Conduct a Presentation.**
- ★ **Purchase Full Four-Day Attendee Registration at a Discounted Rate of \$400.00.**
- ★ **Participate at Night at the Exhibits – Wednesday from 6:00 pm – 7:30 pm.**

## INTERESTED IN HIGHLIGHTING YOUR COMPANY

[Click here to learn more about sponsor opportunities](#)

**Visit [CABE2025.ORG](http://CABE2025.ORG)**





Saturday, March 29, 2025 • Long Beach Convention Center

# HIGH SCHOOL & MIDDLE SCHOOL MARIACHI FESTIVAL-COMPETITION

**Entry Fee:**  
**\$150 per group**

**“Uniting Schools through Music!”**

CABE is taking the lead in California as bilingual music educators to create a presence for Mariachi as part of the state's culture. We live in a Latino/a majority culture, but our culture is not yet seen as an asset, nor is it celebrated for its richness and beauty.

By celebrating Mariachi in a manner that promotes excellence and mastery, CABE is creating a platform that preserves its rich culture, art, and tradition of Mariachi through supporting and expanding Mariachi education in our schools.

Participation in youth Mariachi, gives students a sense of significance, belonging, and pride and includes them in the legacy of the Mariachi they are joining. The positive culture created by a quality youth Mariachi promotes the tenets of social-emotional learning and instills transferable, marketable skills. It increases musical prowess, bilingualism, and retention in schools.

Mariachi brings families together as it is rooted deep into the rich cross-cultural (Spanish — French — Italian — African — Moorish — Indigenous) traditions which celebrate major life events, such as baptisms, weddings, and end-of-life celebrations.

Mariachi is intergenerational, increases family bonds, and promotes parent participation in schools. The CABE Mariachi Festival-Competition promotes the preservation of the art and culture of the Mexican Mariachi heritage.



**Middle School: 1st Prize: \$2,000 • 2nd Prize: \$1,000 • 3rd Prize: \$500**

**High School: 1st Prize: \$2,000 • 2nd Prize: \$1,000 • 3rd Prize: \$500**

## Contest Rules

To enter the contest, groups must submit a 3-5 minute video performing a mariachi song in Spanish. Six finalists will be invited to perform live at the CABE 2025 Annual Conference on Saturday, March 29, 2025 at the Long Beach Convention Center.

During the live performance, a panel of mariachi expert judges will select the winners of the 1st-, 2nd-, and 3rd-place prizes based on the following criteria:

**1. Voice (50%) 2. Expression (30%) 3. Showmanship (20%)**

**Application Deadline: January 10, 2025**

For more information and registration, visit our website

[www.cabe2025.org/2025mariachi](http://www.cabe2025.org/2025mariachi)

*CABE is growing and hiring...*



**COME WORK FOR  
CABE**



## OPEN POSITIONS

- **OFFICE ASSISTANT (FULL-TIME)**
  - DEPARTMENT: PROGRAM AND EVENTS
- **COMMUNICATIONS AND MARKETING OFFICER (FULL-TIME)**
  - DEPARTMENT: ADMINISTRATION TEAM
- **EVENT COORDINATOR (FULL-TIME)**
  - DEPARTMENT: PROGRAM AND EVENTS
- **PART-TIME PROFESSIONAL LEARNING SPECIALIST (STAFF ON-DEMAND)**
  - DEPARTMENT: PROFESSIONAL LEARNING SERVICES (PLS)
- **FAMILY AND COMMUNITY ENGAGEMENT SPECIALIST (PER DIEM)**
  - DEPARTMENT: FAMILY AND COMMUNITY ENGAGEMENT (FACE)

See more information and other open jobs:

[gocabe.org/cabe\\_jobs/](http://gocabe.org/cabe_jobs/)

Questions? Reach out to [info@gocabe.org](mailto:info@gocabe.org)



California Association for Bilingual Education

📍 20888 Amar Rd.  
Walnut, CA 91789-5054

☎ (626) 814-4441  
✉ [info@gocabe.org](mailto:info@gocabe.org)

📞 (626) 814-4640  
💻 [www.gocabe.org](http://www.gocabe.org)

*Watch the recording of our latest webinar...*

# Webinar Recording is Now Available!

## Unlock Reading Success For Culturally and Linguistically Diverse Learners: Principles, Policies, Procedures, and Practices



**Presented by:**

**Jo Gusman**

Bilingual Cross-Cultural Education and Biliteracy Specialist,  
National EL Program Consultant, Policy Advisor and Author

**Watch Video Here:**

**<https://youtu.be/pXKQkgOmKUg>**

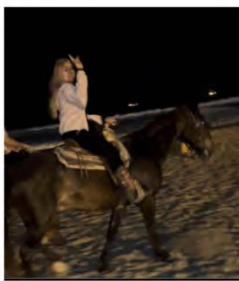
*Meet our new FACE Director, Emma Cabrera...*



Emma Cabrera, the fifth of ten siblings, hails from Magdalena, Jalisco, México. Growing up in a family where her father worked as a mezcal and corn farmer and her mother was a dedicated homemaker, Emma's early life was rooted in strong family values and the importance of education. Spanish was the primary language spoken at home, but her family also embraced English through music and various media.

In her early teens, Emma immigrated to the United States to live with her aunt. Determined to master the English language, she attended night ESL classes, engaged with educational programs like *Reading Rainbow*, and absorbed lessons from the radio. Her transition to El Monte High School was challenging, as she struggled initially with the language barrier. Reflecting on this experience, Emma recalls, "I was so disappointed and discouraged to come to the US with good grades only to be placed in lower-level classes due to my lack of English proficiency."





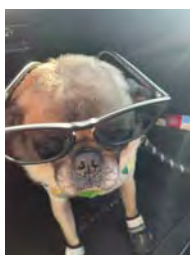
Driven by her parents' strong emphasis on education, Emma pursued higher learning diligently. She began her educational journey by volunteering in her children's Head Start classroom, reading to young learners. When she served as the president of her son's classroom, the school liaison encouraged her to obtain her GED. This marked the beginning of her impressive educational career, leading her to participate in ABC Child Development, a delegate agency of the Los Angeles County Office of Education (LACOE), where she served as vice chairperson and later chairperson, all while earning her teacher assistant certificate through the Developing a Partnership (DAP) program.

Emma's academic achievements continued at Cerritos College, where she earned an A.D. in Child Development and received the prestigious Highest of the Highest Golden Seal award. She furthered her education at CSU-LA, graduating with honors and a B.A. in Child Development Education and Administration. Her senior thesis was recognized as an exemplar for other students in the program. Emma then completed her M.A. in Education/Trauma Studies at Pacific Oaks College and earned a Family Development credential from the University of Connecticut. She aims to pursue a doctorate in the near future.



Her career in education began with her roles as a room mother and classroom parent, eventually leading to her position as ELA/DLAC president in the San Gabriel School District. Emma served as a classroom teacher for ABC Child Development, later advancing to supervise the home-based department. Her expertise grew further at PACE, a delegate agency at LACOE, where she took on multiple roles, including education coach and regional site director. Most recently, she was the executive director at the LA office of the Parent Institute for Quality Education (PIQE), where she focused on building capacity and increasing revenue.

Emma's journey eventually led her to CABE. While attending a CEI community event, she met Brenda Froya, who shared about potential CABE job openings. Inspired by the organization's mission to promote and support bilingualism, Emma joined CABE in August as the Director of Family and Community Engagement (FACE). She emphasizes, "I was thrilled to find a non-profit that values and advocates for bilingualism. My personal experience of being placed in lower-level classes despite knowing the content drives my passion for this work."



Having spent over twenty years married to a Japanese-Korean, Emma has raised her two children in a multilingual, multicultural environment. Her family actively engages in translanguaging, using English, Spanish, and Japanese in their daily lives. Emma's professional journey reflects her commitment to using her multilingual and multicultural experiences as a model for other families.

In her spare time, Emma enjoys playing with her pug, Marbles, snorkeling, traveling to Hawaii, hiking, horseback riding, dancing, river rafting, reading, karaoke, and cheering on the Dodgers with her two sons: Paul, a senior credit analyst, and Jeffrey, a CPA.



## Yolo/Woodland CABE Chapter #76, Region 1



**CABE Yolo/Woodland Chapter 76 Invites you to the following events and to donate to our scholarship fund..**



### **CABE (California Association for Bilingual Education) Yolo/Woodland Chapter 76 October and November Activities, 2024**

CABE Chapter 76 will be collaborating and/or participating in the following events in Woodland. We will have a CABE Ch 76 Information and Fundraising Table at all events.

#### **Yolo Farmworkers Festival, Woodland, Sat. Oct. 5th**

##### **Día de Muertos Celebrations:**

- Beamer Elementary School, Fri. Nov. 1
- Communicare Health Center, Fri. Nov. 1
- Yolo Farm to Fork "Sip and Swirl", Fri. Nov. 7

##### **Latino Heritage and Filipino Heritage Month Celebrations/Events**

- Woodland Public Library, Celebrating Hispanic Heritage Month (9/15 - 10/15) CABE Yolo/Woodland Chapter 76 will contribute to book-drive for children's books in English and Spanish for Woodland's sister city, La Piedad, Mexico.
- Woodland Public Library, Justine Villanueva, Author of "Mungan and Lola", Book Reading and Activities, Wed. 10/30

##### **Meetings/Committees:**

- CABE Chapter 76 General Membership Meeting, Friday, October 18, 2024
- 40th Anniversary Celebration, Beamer Elementary School's Dual Immersion Program Committee (Date: Fri. May 16, 2025)
- Woodland Joint Unified School District Equity Committee





# CABE YOLO/WOODLAND CHAPTER 76

## DONATION

The California Association for Bilingual Education (CABE) Yolo/Woodland Chapter 76 offers annual scholarships to Woodland Joint Unified School District high school students aiming for a teaching career in bilingual education or second language learning.



**Please consider donating to support the CABE Yolo/Woodland Chapter 76 Scholarship Fund. All donations, via check or Venmo, go directly to scholarships for local students. Any amount helps! Tax ID: 95-3151449.**

Check payable to CABE  
Yolo/Woodland  
Mail to 114 Cross St Woodland CA  
Venmo-  
@Gloria-Rodriguez-79



"The CABE scholarship is an important factor to my education because I would be allowed to more easily access content in my classes by using this resource to purchase the required textbooks. In all circumstances, this scholarship has the ability to make each students lives easier by knowing that they have some type of extra support to help them in their college experience." Anahi Mora Chavez, 2021 CABE Chapter 76 Scholarship

## San Diego South County CABE Chapter #65, Region 4

Our annual CABE mini-Conference will be November 2nd 2024. This event is created to gather funds for our community high school multilingual students. There will be a virtual session available as well.



Click to  
view/download  
PDF flyer



### *Other items of interest to the CABE Community...*

*The Center for Equity for English Learners (CEEL)  
invites you to an in-person presentation*



Loyola Marymount University  
Center for Equity for  
English Learners

## **Featured Speaker Series: Dr. Jill Kerper Mora**

Associate Professor Emerita School of Teacher  
Education at San Diego State University

Reaffirming Our Multilingual/  
Multiliteracies Pedagogical Knowledge  
Base: Strengthening the Research to  
Practice Connection



The purpose of this presentation is to transform the current narrative in multilingual and dual language education by moving beyond the current fact-checking of Science of Reading claims and pedagogies. Our goal is to present research-based perspectives and practical strategies that support educators and enhance learning outcomes for multilingual students.

Through the presentation, educators, administrators and leaders will receive insights that challenge current paradigms and advance literacy instruction for multilingual students.

We aim to equip educators with knowledge and resources to foster and embrace more inclusive and effective literacy pedagogies for multilingual and dual language students.

**OCTOBER 10TH, 2024  
6:00 PM - 7:30 PM**

**IN PERSON @  
Loyola Marymount University  
University Hall ECC 1857**

**1 LMU Drive, Los Angeles, CA**

**PLEASE NOTE:  
Onsite parking is \$15**

**RSVP Now**



"Intersectionalities: Justice, Culture,  
Ethnicity and Language"

## 32a Jornada Pedagógica Internacional para la Educación Plurilingüe

¡Le invitamos a una conferencia de desarrollo  
profesional completamente en español!

*¡No se pierda esta oportunidad de participar y dialogar  
utilizando el español en contextos académicos!*

Esta conferencia está diseñada para maestros bilingües que  
trabajan en programas bilingües o de inmersión dual, y también  
para hispanohablantes y padres de familia que desean  
fomentar el uso del español en su familia y comunidad.

### Temas de sesiones:

- Instrucción interdisciplinaria
- Participación de la familia y la comunidad
- Desarrollo de la alfabetización

### INSCRIPCIÓN (Incluye desayuno y almuerzo)

- Costo por participante - \$290
  - Costo para estudiantes universitarios - \$225
- Fecha límite de inscripción: 31 de enero de 2025
- PAGOS: Tarjeta de crédito, órdenes de compra o cheques.

### INSCRIBASE AQUÍ:



\*Note: Habrá inscripción  
limitada el día del evento,  
basado en la disponibilidad, a  
\$310 por persona.

### O usando este enlace:

<https://soe.lmu.edu/centers/ceel/jornadapedagogica/>

Para mayor información envíe un correo electrónico a  
[ceel@lmu.edu](mailto:ceel@lmu.edu)

SÁBADO, 8 DE  
FEBRERO, 2025  
8AM - 3PM

EN PERSONA  
UNIVERSIDAD LOYOLA  
MARYMOUNT  
University Hall, Roski  
1 LMU Drive  
Los Angeles, CA 90045

### Oradores Principales



Miguel Zavala, Ph.D.

Profesor Asociado  
Facultad de Educación  
Universidad de California, Riverside



Elizabeth Howard, Ph.D.

Profesora Asociada  
Facultad de Educación "Nesep"  
Universidad de Connecticut

Oradora patrocinada gracias a



"Intersectionalities: Justice, Culture,  
Ethnicity and Language"

## 32a Jornada Pedagógica Internacional para la Educación Plurilingüe

An International Multilingual Education Professional  
Development Conference entirely in Spanish!

*Don't miss this opportunity to engage & dialogue in  
Spanish in academic contexts!*

This conference is designed for bilingual teachers working in  
bilingual or dual-language immersion programs, as well as for  
Spanish speakers and parents who want to promote the use of  
Spanish in their families and communities.

### Session Themes:

- Interdisciplinary Instruction
- Family & Community Involvement
- Literacy Development

### Registration (Includes breakfast & lunch)

- Registration Fee - \$290
  - Undergraduate/Graduate Student Fee - \$225
- Registration Deadline: January 31, 2024
- Payment: Credit card, Purchase Orders, & checks

### REGISTER HERE:



\*Note: There will be limited  
on-site registration based  
on availability at \$310 per  
person.

### OR using this link:

<https://soe.lmu.edu/centers/ceel/jornadapedagogica/>

For more information, email us at [ceel@lmu.edu](mailto:ceel@lmu.edu)

SATURDAY  
FEB 8, 2025  
8AM - 3PM

IN-PERSON  
LOYOLA MARYMOUNT  
UNIVERSITY  
University Hall, Roski  
1 LMU Drive  
Los Angeles, CA 90045

### Keynote Speakers



Miguel Zavala, Ph.D.

Associate Professor  
School of Education  
University of California, Riverside



Elizabeth Howard, Ph.D.

Associate Professor  
New School of Education  
University of Connecticut

This keynote is sponsored by



Descargar folleto en  
español

Download Flyer in  
English



32nd Jornada Pedagógica Internacional  
para la Educación Plurilingüe  
Saturday, Feb. 8, 2025, 8am - 3pm



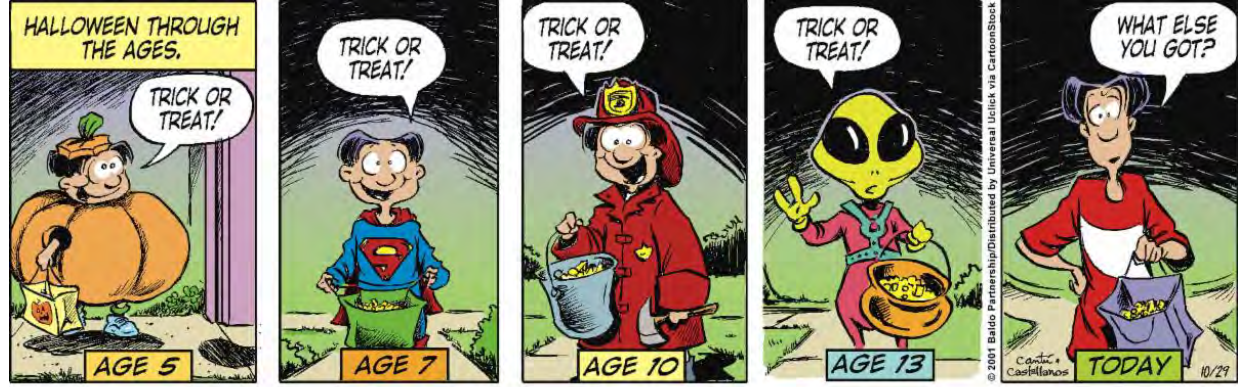
## APPLY for the 7th Annual Alma Flor Ada Award!

We are now accepting applications for the 7th Annual  
Alma Flor Ada Award for Social Justice, which will be  
presented at the 2025 Jornada Pedagógica conference  
on February 8, 2025.

Apply at [tinyurl.com/CEELafa25](https://tinyurl.com/CEELafa25)

Application Deadline: December 16, 2024

Comic Corner...



Contact the editor: Laurie Miles, Communications Manager, [laurie@gocabe.org](mailto:laurie@gocabe.org)



CABE | 20888 Amar Road | Walnut, CA 91789 US

[Unsubscribe](#) | [Update Profile](#) | [Constant Contact Data Notice](#)



Try email marketing for free today!