



**Los Angeles County  
Office of Education**



# **Know Your Educational Rights!**

**Fredy Ruiz  
Immigrant Relations  
Coordinator**



All children, regardless of their immigration status, have a legal right to a public education, and we have to take action to ensure that they have the ability and access to that right



# Agenda

## Educational Rights of Immigrant Students

- History of public education
- Plyler v. Doe
- AB 699: Safe Schools for Immigrant Students
- Attorney General: Guidance & Model Policies
- Bullying
- Public Charge
- Public Benefits
- What's next?





# Educational Rights of Immigrant Students

- **History of Public Education**

- Early challenges and barriers for immigrant students in accessing education
- Supreme Court ruling on equal access to public education

- **Plyler v. Doe key findings**

- Undocumented immigrant children cannot be denied access to public education
- States cannot create barriers to the enrollment of undocumented students



## Educational Rights of Immigrant Students



- AB 699: Safe Schools for Immigrant Students
  - Prohibiting the collection of information regarding immigration status
  - Provides critical protections for immigrant students
  - Requiring the adoption of model policies to prevent immigration enforcement on school grounds
  - Prohibiting discrimination based on immigration status



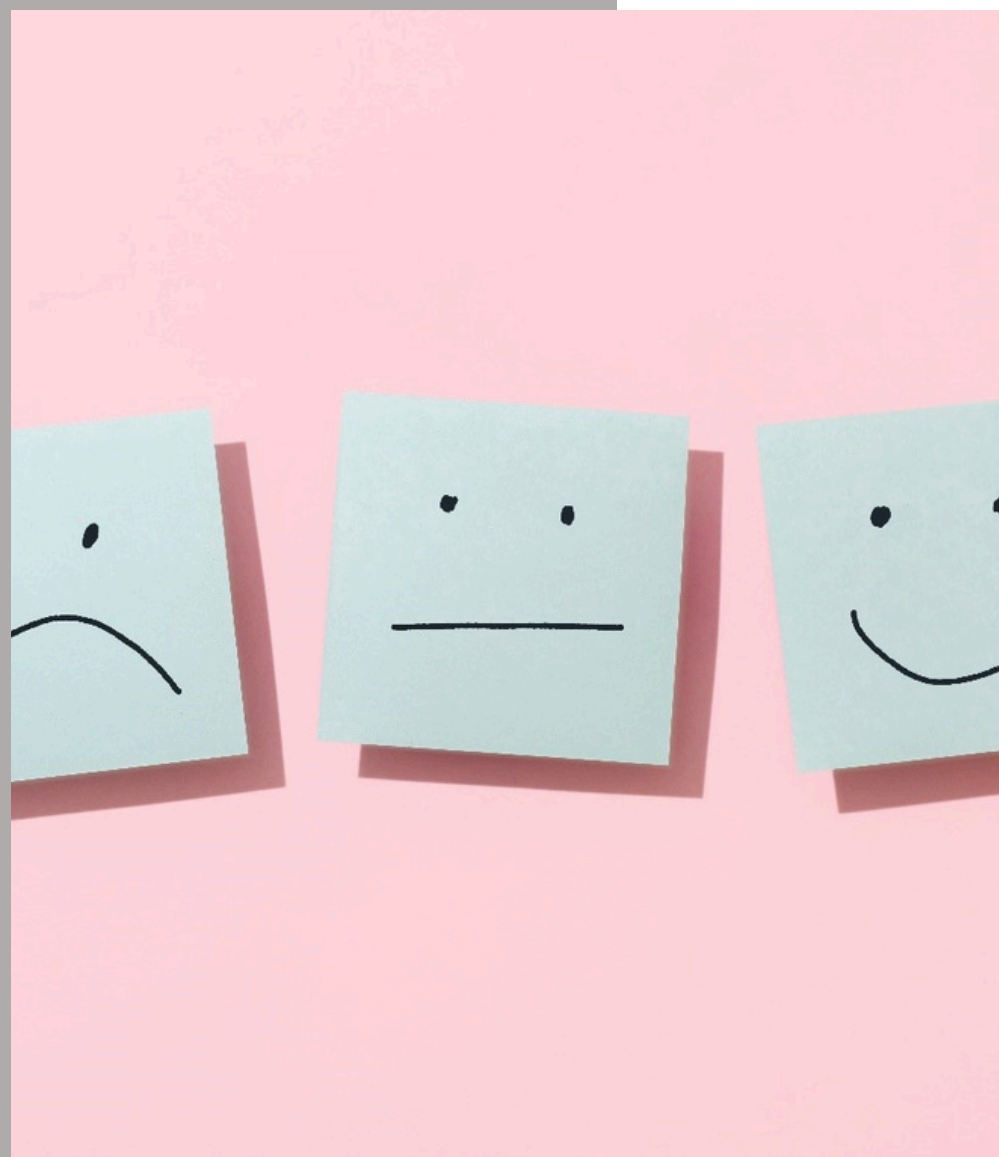
## Educational Rights of Immigrant Students

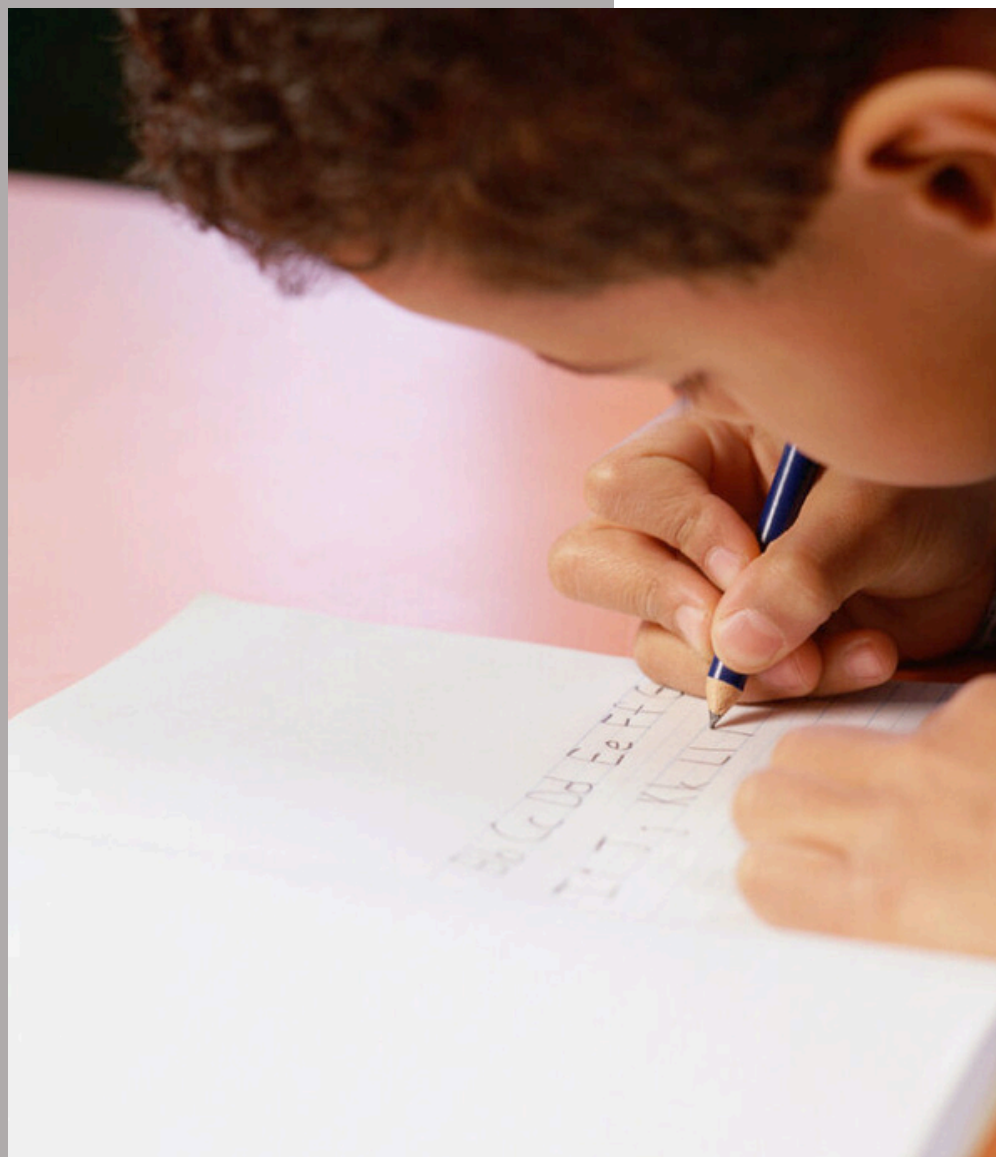
- General: Guidance & Model Policies
  - Gathering and handling student and family information
  - Sharing student and family information
  - Responding to requests for access to school grounds for Immigration-Enforcement purposes
  - Responding to the detention of a student's family member
  - Responding to hate crimes and bullying related to national origin or ethnicity



# Protecting Students from Bullying

- Definition by California Department of Education:
  - The California Department of Education defines school bullying generally as a form of violence that involves a real or perceived imbalance of power, with the more powerful child or group attacking those who are less powerful. Bullying can be physical, verbal, or emotional, and it can occur face-to-face or online





## Bullying Based on Immigrant Status

- What “Immigration Status” means:
  - Immigration status refers to whether an individual is a citizen, a documented or undocumented immigrant
- Bias means prejudice in favor of or against one thing, person, or group compared with another, usually in a way considered to be unfair
- Migrant, Refugee, and Newcomer students typically face higher rates of immigrant status bullying





# Public Charge



- What is Public Charge?
  - Public Charge is a rule for some people applying for Lawful Permanent Residence or certain other visas to enter the U.S. It mainly affects people applying based on a family petition
  - A person deemed to be **likely** to become a public charge **in the future** can be denied admission
  - Many categories of immigrants are exempt from public charge inadmissibility



## Which Public Benefits Will Be Considered in a Public Charge Test?

- Monthly Cash Assistance
  - Supplemental Social Security (SSI)
  - CalWORKs
  - General Relief
  - Cash Assistance Programs for Immigrants

***\*\*\*Use of cash benefits by eligible children or household members DOES NOT count***

- Long-Term institutional care (like a nursing home or a psychiatric institution) paid by Medi-Cal



## Safe to use Public Benefits

- Medi-Cal (except for long-term institutional care)
- All Nutrition, School, and Childcare!
  - Free or reduced school meals
  - Scholarships
  - Hotspots
  - Chrome notebooks
  - Head Start programs



# Public Benefits

- What is full scope Medi-Cal?
  - A comprehensive medical coverage provided to eligible individuals and families
- Eligibility
  - Available to low-income individuals and families who meet the income and asset requirements
- Benefits
  - Full scope Medi-Cal provides a wide range of healthcare services



# CalWORKs



- What is CalWORKs?
  - Cash aid for families who are low-income with a child where a parent is absent, unemployed or disabled
- Who may be eligible?
  - Citizens & LPRs
  - Asylee
  - Refugee



# CalFresh

- What is CalFresh?
  - California's food assistance program designed to help low-income individuals and families purchase nutritious food
- Who may be eligible?
  - Certain immigrants are eligible for CalFresh



# What's Next?



- Stay informed
  - Know Your Rights
  - Take care of your emotional wellbeing
  - Seek help from friends and family members
  - Ask questions
  - Reliable sources
  - Share what you learned with peers and family members



**Los Angeles County  
Office of Education**



**Thank You. Any questions?**



**Fredy Ruiz  
Immigrant Relations Coordinator  
Ruiz\_Fredy@lacoed.edu**