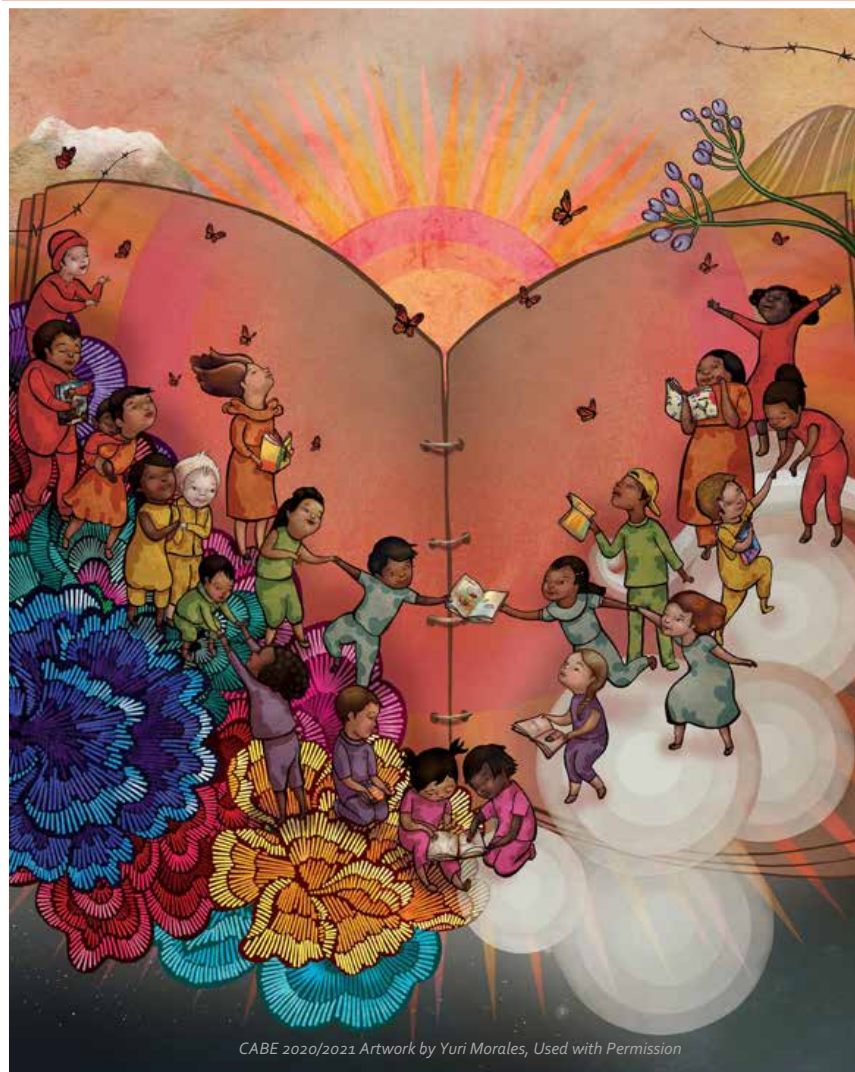
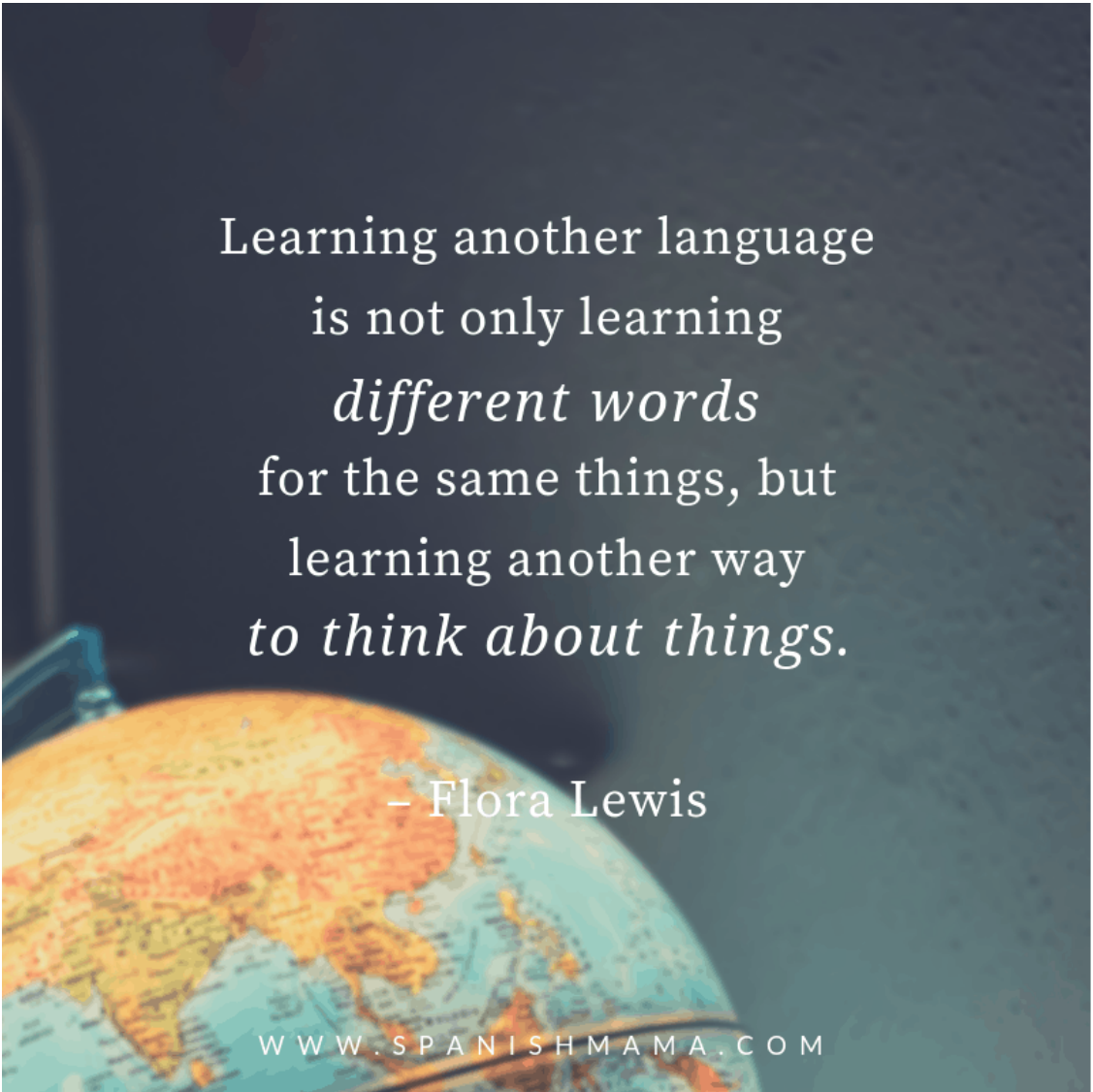


CABE ANNUAL MEMBERSHIP REPORT



CABE 2020/2021 Artwork by Yuri Morales, Used with Permission

CABE ANNUAL MEMBERSHIP REPORT



Learning another language
is not only learning
different words
for the same things, but
learning another way
to think about things.

– Flora Lewis

WWW.SPANISHMAMA.COM

CABE ANNUAL MEMBERSHIP REPORT

Table of Contents

Vision and Mission Statements.....3

Message from the Presidents and CEO.....4

CABE Strategic Plan: The CABE Compass

•The CABE Compass—Our Strategic Plan.....5-8

•Cardinal Point #1 Envisioning Success.....9

•Cardinal Point #2 Designing for Success.....10

•Cardinal Point #3 Engaging the Community for Success.....11

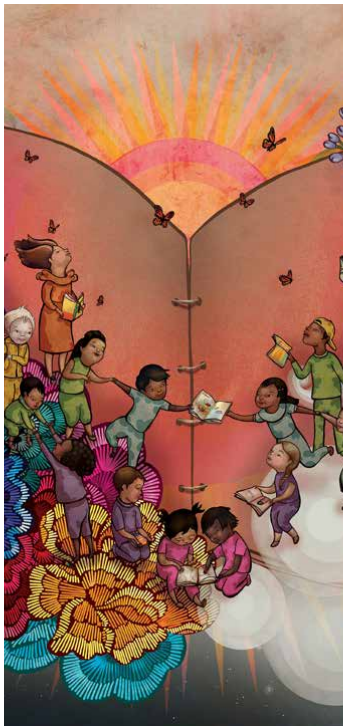
•Cardinal Point #4 Accountability for Success.....12

ORGANIZATIONAL STATE

Financial Statements.....14

Board of Directors.....15

CABE Headquarter Staff.....16



CABE ANNUAL MEMBERSHIP REPORT

CABE Vision and Mission



Vision

**BILITERACY, MULTICULTURAL
COMPETENCY, AND EDUCATIONAL
EQUITY FOR ALL**

Mission Statement

To support the vision of biliteracy, multicultural competency and educational equity for all students, we will embody our shared values by implementing priorities, initiatives and services designed to increase California's capacity to create caring and highly effective learning environments that promote multiliteracy and support English Learners and all diverse populations to graduate college, career, and globally prepared to live their lives to their fullest potential.

CABE is a statewide advocacy organization with members and chapters and affiliates across the state who firmly believe that ALL students have the right to be bilingual. CABE focuses on the needs of the 1.4 million English Learners in the state of California by offering professional learning for educators, regional and annual conferences, parent and family engagement and leadership training, membership support, research, and statewide policy and legislative advocacy. CABE has is governed by a 14-member Board of Directors and consists of a staff of forty plus members. CABE supports the work and contributions of chapters, members, and affiliates, along with partnerships with other state and national advocacy organizations working to promote equity and student achievement for students with diverse cultural, racial, and linguistic backgrounds.

CABE ANNUAL MEMBERSHIP REPORT

THEORY OF ACTION

IF we are an organization that believes in and is committed to

Equity • *Servant Leadership* • *Respect*
Cultural & Linguistic Human Rights • *Integrity*

THEN we will:



• **EXEMPLIFY PRACTICES** that distribute resources based on student need.



• **PROMOTE A SENSE OF COMMUNITY** and share the power in decision making and in developing leadership capacity within everyone.



• **DEMONSTRATE ADMIRATION** for organization members, staff, educators, students, community and for their achievements abilities, qualities and culture.



• **ADVOCATE, LEAD, SUPPORT AND EMPOWER** culturally and linguistically diverse students, families, teachers, and administrators with integrity and equity for all.



• **BE RESPECTFUL, INCLUSIVE, AND HONEST** with the students, families and organizations we serve.

We will **hold ourselves accountable** to exemplify our **mission and vision** through a **shared reciprocal process** with **those we serve**.

CABE ANNUAL MEMBERSHIP REPORT

A MESSAGE FROM

OLIVIA YAHYA • PRESIDENT (2019-2021)

BARBARA FLORES • PRESIDENT (2021-Present)

JAN GUSTAFSON-COREA • CHIEF EXECUTIVE OFFICER

April 2, 2022

Dear CABE Members & Partners:

We are honored to present to you, on behalf of our Board of Directors and the CABE Team, the 2020-2021 Annual Membership Report. Within this report you will find information on the fiscal and programmatic positions of CABE, as aligned to our CABE Strategic Plan, from the fiscal year, 2020-2021.

The 2020-21 Annual Membership Report represents a year of continued growth and development at CABE, guided by our strategic plan which was renewed in 2019. Over the last year, we have sustained our organization during the challenging impact of the Coronavirus pandemic, responded with adapted and relevant professional learning programs and offerings and maintained a healthy fiscal position. CABE dedicated staff time and resources to the implementation of our vision of biliteracy, multicultural competency and educational equity for all through virtual platforms and proudly, we have maintained our CABE Team (full and part time staff and consultants) at over 40 members. We continue to be strong and constant voice for ELs and Biliteracy programs in Sacramento, the state of California, and throughout the nation. We say once again that **"the state of CABE is strong!"**

Since 1975, CABE has been at the forefront of the efforts and movement to meet the needs of our students, their families and the educators who serve them. CABE officially submitted Articles of Incorporation in 1976, and now, after 47 years of service, we continue to see strong gains made in supporting Biliteracy and English Learner students, yet there remains much to do to. CABE continues to respond to and participate in the dramatic educational shifts that we are experiencing in California through the lens of our English Learner student needs—the English Learner Roadmap Policy (approved in July 2017), the implementation of Prop 58 and the growth of biliteracy programs, the full implementation of the ELA/ELD Framework and the ELD Standards, the implementation of the Local Control Accountability Plan (LCAP) as part of the Local Control Funding Formula (LCFF), and the growing support and movement for biliteracy and multilingual instructional programs, resources and support in California.

This annual report for the 2020-21 fiscal year reflects the on-going and ever so important work that CABE engages in day-to-day. CABE provides services and support systems through our wide range of programs—**conferences** (annual and regionals), **membership services**, **Parent and Family Engagement**, **CABE Professional Development Services** (providing professional learning mentoring and coaching), **strong advocacy** at the state and national levels, and regular updates and resources through our **website and social media**. We are growing fiscally and programmatically, and we are poised to move forward in the 21st Century. We are honored that you are part of that journey with us!

Con mucho respeto y cariño,

Olivia Yahya
CABE President, 2019-2021

Dr. Barbara Flores
CABE President, 2021-Present

Jan Gustafson Corea
CABE CEO

CABE PROGRAM SUMMARY—2020-2021

The 2020-2021 has been a full year of remote and virtual services to the CABE community across the state, nation and world. While COVID-19 continued to place limits on physical gatherings and has forced the CABE team to work remotely for over 15 months, the vibrancy, creativity and deep commitment of the CABE Team has been one of the most prevailing factors of these last several months. We have grown in new skills, remained highly visible, collaborated, focused on putting the 6Cs into action, and continued to serve our community, members, and partners with passion and expertise.

The summary below provides a snapshot view of who we have served and in which parts of the state.

ORGANIZATIONAL ACCOMPLISHMENTS: 2020-2021

PARENT & FAMILY ENGAGEMENT--PFE

The PFE Department served over 2437 parents via P2i, DELIGHT, CDE Migrant SPAC, SIRS, FAFSA Webinars and Statewide Cafecito con CABE this 2020-2021 school year.

Parent Participants Served 2020-2021	
Program	Total Number Of Parents Served
Northern CA P2i	94
Southern CA P2i	431
SIRS	1200
DELIGHT P2i	88
CDE Migrant SPAC Leaders	23
Cafecito con CABE	300
FAFSA with Families	175
Plaza Comunitaria	86
Students Webinar about FASFA	40
Total	2437

Plaza Comunitaria Graduates 2020-2021

Plaza Comunitaria Primaria Completed	10
Plaza Comunitaria Secundaria Completions	12
Plaza Comunitaria Preparatoria Completions	4
Libro Terapia (Book Club Participants)	60
TOTAL	86

COMMUNITY ENGAGEMENT INITIATIVE/CCEE

Since 2018, CABE has engaged with the CCEE as a co-lead of the Community Engagement Initiative. In partnership with the San Bernardino County Superintendent of Schools and Families in Schools, we currently serve and support the following 13 districts as part of Cohorts I and II to authentically engage and support school communities and families through the lens of equity, the EL Roadmap, and mutual trust. CEI is part of the statewide Systems of Support.

The Goals of the Peer Leading and Learning Network-Cohort are:

- Deepen the community engagement of school districts and participating communities.
- Define common characteristics and best practices where engagement among communities, pupils, schools and school districts are strong.
- Identify and test metrics for measuring increases in community engagement.
- Develop a protocol for facilitating future PLLNs to help other communities and school districts improve and deepen their relationships and interactions.
- Develop criteria for selecting other teams that would benefit from and be successful in improving community engagement.
- Create capacity within each team to cofacilitate a future Community Engagement Initiative PLLNs.

COHORT I Districts

- Anaheim Union High School District
- Azusa Unified School District
- Cajon Valley Union School District
- Ontario-Montclair School District
- Oxnard School District

COHORT II Districts

- Victor Valley Unified School District
- Santa Ana Unified School District
- Moreno Valley USD
- Val Verde USD
- Bakersfield USD
- Parlier SD
- Salinas Union

CABE ANNUAL MEMBERSHIP REPORT

PROGRAMS & EVENTS—P & E

The Program and Events Team offered two virtual parent and para-educator conferences, 2 specialized series—Racial Equity and Shadowing, one summer DLI Institute and the CABE 2021 annual conference. All events were presented via a main website portal and Zoom accounts. CABE served over 5580 participants in these events.

The following chart provides an overview of the events/conferences offered and the number and type of attendees.

Registration Type	CABE 2021 Annual	Fall Parent 2020	Racial Equity Series 2021	Spring Para & Parent 2021	MLS Shadowing Series 2021	Spanish Summer DLI 2021	Grand Total for all Events
Parents	942	334	0	269	0	0	1545
Para-Educators	196	21	1	78	1	2	299
Teachers	1330	6	125	12	48	308	1829
Administrators	673	33	72	33	47	110	968
Other	794	16	7	29	18	75	300
Total Registrants	3935	410	205	421	114	495	5580

CABE ANNUAL MEMBERSHIP REPORT

PROFESSIONAL LEARNING—PL/PDS

The Professional Learning Team provides professional learning through CABE Professional Development Services. Some of our most sought after topics include:

CABE PROFESSIONAL LEARNING TOPICS FOR PROFESSIONAL DEVELOPMENT	
Biliteracy/Dual Language Immersion	ELPAC
Integrated and Designated ELD	CREATE Framework
EL/Multiliteracy Masterplan	EL Roadmap
Guiding Principles of Dual Language Education	Binational GLAD
Dual Language Teacher Academy (DLTA) 8 modules that are presented as part of an 8 part series and/or as stan-alone sessions:	
Las mejores prácticas para la educación en dos idiomas Best Practices in Dual Language Education;	La pedagogía de la enseñanza de la gramática en español (El “qué” y “cómo”) Spanish Grammar Instruction (The “What” and the “How”);
Becoming a Reflective Dual Language Teacher;	Las transferencias interlingüísticas en el programa de doble idioma Cross-Linguistic Transfer in a Dual Language Program;
Foundations for a Strong, Successful, and Sustainable Dual Language Program	Las mejores prácticas para la enseñanza de la escritura en español en un aula de educación en dos idiomas Best Practices for Spanish Writing Instruction in a Dual Language Classroom
El desarrollo del español académico para maestros de doble idioma Academic Spanish Language Development for Dual Language Teachers	La pedagogía para la enseñanza auténtica de la lectura Authentic Spanish Reading Instruction;

Service Numbers

- 18 districts with long-term contracts
- 1935 teachers and administrators.
- 305 administrators and teachers attended DLTA
- 347 teachers and administrators attended the Back to School Series

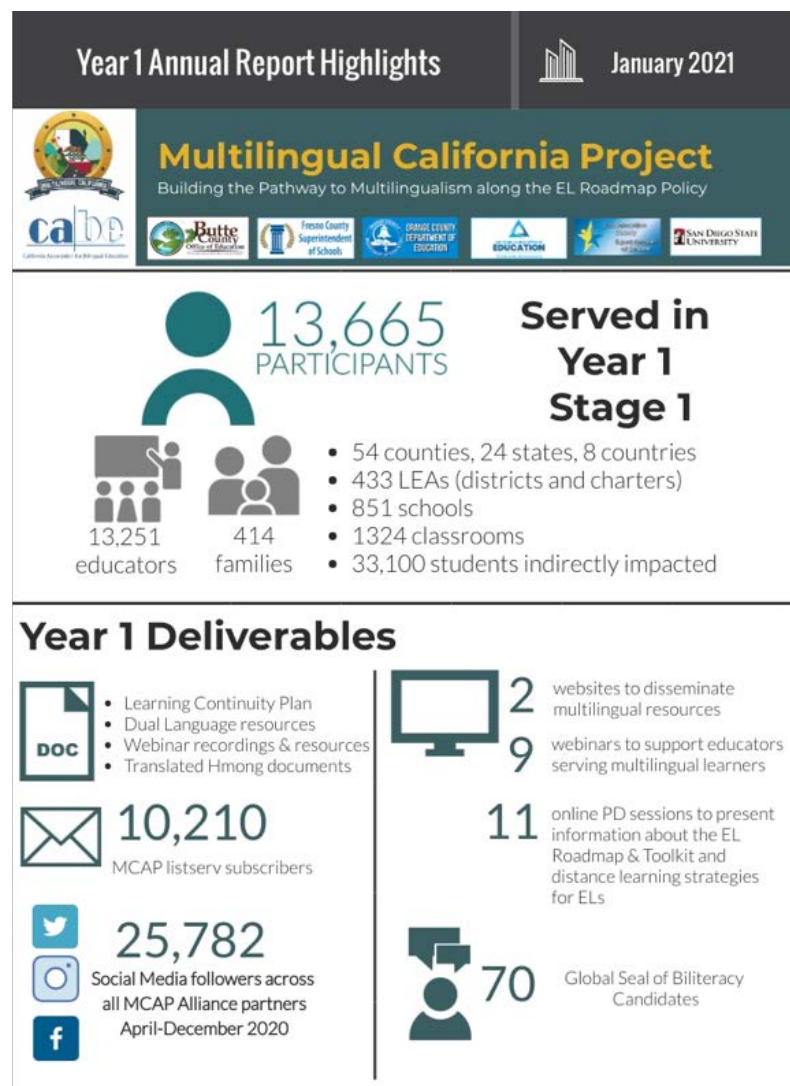
CABE ANNUAL MEMBERSHIP REPORT

GRANT PROGRAMS

CABE has acquired grants at the state and federal level—one state Educator Workforce Investment Grant (EWIG), and one National Professional Development (NPD) Grant from the USDOE. We have submitted our application for a second NPD grant. (*Received in September 2021*). Additionally, we receive foundational funding through the Sobrato Family Foundation and the Silvergiving Foundation.

MULTILINGUAL CALIFORNIA—MCAP

The Educator Workforce Investment Grant (EWIG)—Multilingual California/MCAP is part of our professional learning offerings as well. MCAP is a three-year grant, led by CABE in partnership with 5 COEs, SDSU and 26 school districts. See the following page for the year one report submitted to the California Department of Education in January 2021.



CABE ANNUAL MEMBERSHIP REPORT

PROJECT DELIGHT—NPD GRANT (2017-2022)

The California Association for Bilingual Education (CABE) and its partners, Fontana Unified School District and Rialto Unified School District, in San Bernardino County, California, are collaborating on the Dual Language Education Leadership Initiative Guided High-Quality Training (DELIGHT) Project.

DELIGHT uses professional development (PD) for educators and families to create high-quality Dual Immersion (DI) programs, from elementary to middle school, at district and site levels, in full DI schools and in schools with a DI strand (at least one DI classroom per grade level). All teachers at the schools participate in PD modules based on CABE's successful PD programs and the Guiding Principles of Dual Language Education. The modules are differentiated by program type for teachers, administrators, and families.

Linked to this PD and DI program development is a Family Leadership Program, based on CABE's i3-funded Project 2INSPIRE. Family members move through 4 levels of family engagement and become leaders and part of the School Leadership Team, developing a school family engagement plan, serving as language models and instructional support, and becoming partners in the DI classroom. DELIGHT will collaborate with other agencies to develop tools and models for DI and to create a DI Certification Program for teachers.

Six elementary and three middle schools participate in DELIGHT. Each year, DELIGHT serves approximately: 17 district and site administrators; 130 in-service teachers; 3,000 students; 80 parents. By the end of the project (2022), DELIGHT will serve (an unduplicated count): 22 administrators; 175 in-service teachers, including 30 who will attain their DI Certificate and/or Bilingual Authorization; 5,000 students; 360 parents, including 5 who will complete courses for a Paraprofessional Certificate, and 30 who will attain their elementary or secondary diploma. Project goals and outcomes are to: develop district and site leadership teams to support improved EL instruction and create excellent DI programs; increase in-service teacher capacity to implement instruction using evidence-based strategies to increase EL outcomes; engage families to support their children's learning, and to become school leaders; and increase outcomes of ELs in English and Spanish language development and their academic achievement in English Language Arts/Reading, and math.

Contact: Maria Villa, Project Director, 626-814-4441, mvilla@gocabe.org

CABE ANNUAL MEMBERSHIP REPORT

DISTRICTS SERVED IN 2020-2021—BY PROGRAM & REGION

Districts Served by CABE 2020 21	P & E	PDS	PFE	MCAP	REGION
Alameda	1				1
Albany City Unified	1				1
Alum Rock Union Elementary	1				1
Amador County Unified	1				1
Antioch Unified	1	1			1
Berryessa Union Elementary	1				1
Butte County Office of Education	1			1	1
California Education Authority (CEA)	1				1
Cambrian	1				1
Campbell Union	1				1
Castro Valley Unified	1				1
CDE	1		1	1	1
Center Joint Unified	1				1
Ceres USD		1			1
Chico Unified	1			1	1
Colusa Unified	1				1
Corning Union High	1			1	1
Del Norte County Unified	1				1
Dublin Unified	1				1
East Side Union High	1				1
Eastside Union Elementary SD	1				1
Elk Grove Unified	1				1
Enterprise Elementary	1				1
Fairfield-Suisun Unified	1				1
Franklin-McKinley Elementary	1				1
Fremont Unified	1				1
Glenn County Office of Education	1				1
Hamilton Unified School District	1			1	1
Hayward Unified	1				1
Kings Canyon Joint Unified	1				1
Live Oak Elementary School District	1				1

CABE ANNUAL MEMBERSHIP REPORT

Districts Served by CABE 2020 21	P & E	PDS	PFE	MCAP	REGION
Livermore Valley Joint Unified	1				1
Lodi Unified	1				1
Menlo Park City Elementary	1				1
Morgan Hill Unified	1		1		1
Mountain Empire USD		1			1
Mt. Diablo Unified	1		1		1
Mt. Pleasant Elementary	1				1
Napa Valley Unified	1				1
Natomas Unified	1				1
New Jerusalem Elementary	1				1
Newark Unified	1				1
Oak Grove Elementary	1		1		1
Oakland Unified	1		1		1
Orland Joint Unified	1				1
Palermo Union Elementary	1			1	1
Paso Robles Joint Unified	1				1
Patterson Joint Unified	1				1
Pittsburg Unified	1				1
Raisin City Elementary	1				1
Redwood City Elementary	1				1
Richgrove Elementary	1				1
Richland Union Elementary	1				1
Ripon Unified	1				1
River Delta Joint Unified	1				1
Robla Elementary	1				1
Roseland	1				1
Roseville Joint Union High	1				1
Sacramento City Unified	1				1
Sacramento COE	1				1
San Benito County Office of Education	1				1
San Francisco COE	1				1
San Joaquin COE	1				1
San Jose Unified	1				1
San Juan Unified	1				1

CABE ANNUAL MEMBERSHIP REPORT

Districts Served by CABE 2020 21	P & E	PDS	PFE	MCAP	REGION
San Leandro Unified	1		1		1
San Lorenzo Unified	1				1
San Mateo Union High	1				1
San Mateo-Foster City	1				1
San Rafael City Elementary	1				1
Santa Clara County Office of Education	1				1
Santa Clara Unified	1				1
Santa Cruz City Elementary	1				1
Soquel Elementary School District	1	1			1
Stanislaus Union Elementary	1				1
Stockton Unified	1				1
TEAM Charter			1		1
Tehama County ROP	1				1
Thermalito Elementary School District	1			1	1
Tracy Joint Unified	1				1
Turlock Unified	1				1
Twin Rivers Unified	1				1
Ukiah Unified	1				1
Vallejo City Unified	1				1
West Contra Costa Unified	1				1
Williams Unified	1		1		1
Windsor Unified	1				1
Winters Joint Unified	1				1
Woodland Joint Unified	1	1	1		1
Yuba City Unified	1				1
Alisal Union	1				2
Bakersfield City	1				2
Burton Elementary	1				2
Chualar Union	1				2
Delano Union Elementary	1				2
Delhi Unified	1				2
Denair Unified	1				2
Fresno County Supt of Schools				1	2
Gilroy Unified	1		1		2

CABE ANNUAL MEMBERSHIP REPORT

Districts Served by CABE 2020 21	P & E	PDS	PFE	MCAP	REGION
Golden Plains Unified School District				1	2
Gonzales Unified	1				2
Greenfield Union School District	1				2
Jamestown Elementary	1				2
Kerman Unified	1				2
Kern County Office of Education	1				2
Kern High School District	1				2
Lamont Elementary	1				2
Laton Joint Unified	1			1	2
Madera Unified	1				2
McFarland Unified	1				2
Mendota Unified School District				1	2
Merced Union High School District	1				2
Monterey County Office of Education	1				2
North Monterey County Unified	1				2
Fresno County Supt of Schools	1				2
Orange Center	1			1	2
Pajaro Valley Unified	1				2
Panama Buena Vista	1		1		2
Parlier School District			1		2
Porterville Unified	1				2
Salinas City Elementary School District	1				2
Salinas Union High District	1		1		2
San Luis Coastal Unified	1				2
Sanger Unified	1			1	2
Santa Rita Union School District	1				2
Selma Unified	1				2
Sequoia Union Elementary	1				2
Sequoia Union High	1				2
Solano County Office of Education	1				2
Soledad Unified	1				2
South Monterey County JUHSD	1				2
Tulare County Office of Education	1				2

CABE ANNUAL MEMBERSHIP REPORT

Districts Served by CABE 2020 21	P & E	PDS	PFE	MCAP	REGION
Vacaville Unified	1	1			2
Visalia Unified	1				2
Washington Unified	1				2
Farmersville Unified	1				2
Parlier SD			1		2
Anaheim Elementary	1			1	3
Anaheim Union High	1			1	3
Azusa Unified	1				3
Baldwin Park Unified	1				3
Bassett Unified	1				3
Bellflower Unified	1				3
Cal Poly, Pomona	1				3
Canoga Park Language Academy			1		3
Capistrano Unified	1				3
Charter Oak Unified	1		1		3
Chino USD			1		3
Cypress Elementary	1				3
Downey Unified	1				3
East Whittier City ESD	1				3
El Monte USD			1		3
El Rancho Unified	1	1			3
Evergreen Elementary, Diamond Bar	1				3
Fullerton Elementary	1				3
Garden Grove Unified	1	1	1		3
Garvey Elementary	1				3
Glendale Unified	1		1		3
Hacienda la Puente Unified	1				3
Inglewood Unified	1				3
La Habra City Elementary	1				3
Lancaster Elementary	1				3
Las Virgenes Unified	1				3
Lawndale Elementary	1				3
Lincoln Unified	1				3
Long Beach Unified	1				3

CABE ANNUAL MEMBERSHIP REPORT

Districts Served by CABE 2020 21	P & E	PDS	PFE	MCAP	REGION
Los Angeles County Office of Education	1				3
Los Angeles Unified	1				3
Lynwood Unified	1				3
Monrovia Unified	1				3
Montebello Unified	1				3
Mountain View Elementary	1				3
Mt. View USD			1		3
N.E.W. Academy			1		3
Newhall	1				3
Newport-Mesa Unified	1				3
Norwalk-La Mirada Unified	1				3
Ontario-Montclair	1				3
Orange County Department of Educ	1			1	3
Orange Unified	1				3
Pasadena Unified	1				3
Placentia Yorba Linda Unified	1				3
Pomona Unified	1				3
Rowland Unified	1				3
Saddleback Valley Unified	1				3
San Gabriel Unified	1	1			3
Sant Monica- Malibu USD		1			3
Santa Ana Unified	1				3
Santa Monica-Malibu Unified	1				3
Simi Valley Unified	1				3
South Whittier Elementary	1				3
Torrance Unified	1				3
West Covina Unified	1				3
Westminster	1				3
Whittier Union High	1				3
William S. Hart Union High	1				3
Adelanto Elementary	1				4
Alvord Unified	1		1		4
Apple Valley Unified	1				4
Banning Unified	1				4

CABE ANNUAL MEMBERSHIP REPORT

Districts Served by CABE 2020 21	P & E	PDS	PFE	MCAP	REGION
Barstow Unified	1			1	4
Bishop Unified	1				4
Bonita Unified	1				4
Borrego Springs Unified School District	1				4
Brawley Elementary	1				4
Cajon Valley Union School District	1				4
Calexico Unified	1				4
CARPE			1		4
Chaffey Joint Union High	1				4

Districts Served by CABE 2020 21	P & E	PDS	PFE	MCAP	REGION
Chula Vista Elementary School District	1			1	4
Claremont Unified	1				4
Coachella Valley Unified	1	1			4
Colton Joint Unified	1			1	4
Corona Norco USD	1		1		4
Desert Sands Unified	1	1			4
Escondido Union High School District	1				4
Escondido Union High School District	1	1			4
Fallbrook Union ESD	1			1	4
Fontana Unified	1		1	1	4
Grossmont Union High School District	1				4
Hemet Unified	1		1		4
Hesperia Unified	1			1	4
Holtville Unified	1				4
Imperial County Office of Education	1		1		4
Imperial Unified	1				4
Inyo County Office of Education		1			4
Jamul-Dulzura School District	1			1	4
Jurupa Unified	1				4
Lemon Grove	1			1	4
Lucerne Valley Unified	1				4
Meniffee Union School District	1				4

CABE ANNUAL MEMBERSHIP REPORT

Districts Served by CABE 2020 21	P & E	PDS	PFE	MCAP	REGION
Moreno Valley Unified	1		1		4
Murrieta Valley Unified	1				4
National School District	1			1	4
Norton Science		1	1		4
Nuvview Union	1		1		4
Oceanside Unified School District	1				4
Oro Grande Elementary	1				4
Palm Springs	1	1	1		4
Perris Elementary	1		1		4
Perris Union High	1				4
Poway Unified School District	1				4
Redlands Unified	1			1	4
Rialto Unified	1	1		1	4
Riverside County Office of Education	1				4
Riverside Unified	1		1		4
Romoland School District	1				4
San Bernardino City Unified	1			1	4
San Bernardino County Supt of Schools	1				4
San Diego County Office of Education	1			1	4
San Diego Unified School District	1		1		4
San Dieguito UHSD	1				4
San Marcos Unified School District	1				4
San Ysidro School District	1				4
SBC - High Tech High	1				4
SBE - Academia Avance Charter	1				4
South Bay Union School District	1			1	4
Val Verde Unified	1		1		4
Valley Center-Pauma USD	1			1	4
Victor Elementary	1				4
Vista Unified School District	1				4
Westmorland Union Elementary	1				4
Westside Elementary	1				4
Ontario-Montclair			1		4
Victor Valley USD			1		4
Acton-Agua Dulce Unified	1				5

CABE ANNUAL MEMBERSHIP REPORT

Districts Served by CABE 2020 21	P & E	PDS	PFE	MCAP	REGION
Antelope Valley UHSD	1				5
Carpinteria Unified	1				5
Conejo Valley Unified	1		1		5
Hueneme Elementary	1				5
Keppel Union Elementary	1				5
Ojai Unified	1				5
Oxnard Elementary School District	1		1		5
Palmdale Elementary School District	1		1		5
Santa Barbara Unified	1	1			5
Santa Maria-Bonita	1				5
Santa Paula Unified	1		1		5
Ventura COE	1		1		5
Ventura Unified	1				5
Pleasant Valley	1				5
Rio Elementary	1				5
College Access Network			1		

OTHER HIGHLIGHTS

- **MULTILINGUAL EDUCATOR:** [CABE Annual Magazine, 2021 Edition](#)

CABE CORNER—[Monthly Newsletter](#)

- **SOCIAL MEDIA**
 - [FACEBOOK](#) FOLLOWERS: 8449
 - [INSTAGRAM](#) FOLLOWERS: 1051

CABE ANNUAL MEMBERSHIP REPORT

CALIFORNIA ASSOCIATION FOR BILINGUAL EDUCATION STATEMENT OF FINANCIAL POSITION JUNE 30, 2021 AND 2020

	Without Donor Restrictions	With Donor Restrictions	2021	2020
<u>Assets</u>				
Cash	\$ 2,169,509	\$ 397,916	\$ 2,567,425	\$ 3,677,548
Accounts Receivable	644,708	-	644,708	533,565
Contributions Receivable	-	350,000	350,000	300,000
Investments	1,087,261	-	1,087,261	1,082,201
Inventory	14,266	-	14,266	14,266
Prepaid Expenses and Deposits	65,803	-	65,803	90,754
Property and Equipment, Net	3,547,739	-	3,547,739	3,703,622
Total Assets	<u>\$ 7,529,286</u>	<u>\$ 747,916</u>	<u>\$ 8,277,202</u>	<u>\$ 9,401,956</u>
<u>Liabilities</u>				
Accounts Payable and Accrued Expenses	\$ 288,048	\$ -	\$ 288,048	\$ 692,588
Deferred Revenue	3,569	-	3,569	408,305
Advanced Receipts on Conditional Contributions	1,557,932	-	1,557,932	3,000,000
Note Payable	2,186,553	-	2,186,553	2,273,107
Loans	895,803	-	895,803	959,370
Total Liabilities	<u>4,931,905</u>	<u>-</u>	<u>4,931,905</u>	<u>7,333,370</u>
<u>Net Assets</u>				
Without Donor Restrictions	2,597,381	-	2,597,381	1,619,568
With Donor Restrictions	-	747,916	747,916	449,018
Total Net Assets	<u>2,597,381</u>	<u>747,916</u>	<u>3,345,297</u>	<u>2,068,586</u>
Total Liabilities and Net Assets	<u>\$ 7,529,286</u>	<u>\$ 747,916</u>	<u>\$ 8,277,202</u>	<u>\$ 9,401,956</u>

The accompanying notes are an integral part of these financial statements.

CABE ANNUAL MEMBERSHIP REPORT

**CALIFORNIA ASSOCIATION FOR BILINGUAL EDUCATION
STATEMENT OF ACTIVITIES
FOR THE YEAR ENDED JUNE 30, 2021
(WITH SUMMARIZED TOTALS FOR THE YEAR ENDED JUNE 30, 2020)**

	Without Donor Restrictions	With Donor Restrictions	Total	2020
<u>Support and Revenue</u>				
Conference Fees	\$ 1,987,875	\$ -	\$ 1,987,875	\$ 926,436
Grants and Contributions	25,500	670,000	695,500	82,624
Government Grant	2,522,446	-	2,522,446	605,342
Membership Dues	71,857	-	71,857	105,413
Program Income	805,122	-	805,122	926,737
Publications and Promotional Sales	239	2,124	2,363	2,442
Investment Income	5,261	4,036	9,297	22,546
Net Assets Released From Restrictions	377,262	(377,262)	-	-
Total Support and Revenue	5,795,562	298,898	6,094,460	2,671,540
<u>Expenses</u>				
Program Services	4,237,506	-	4,237,506	3,716,451
Supporting Services:				
Management and General	559,457	-	559,457	1,031,004
Fundraising	20,786	-	20,786	29,122
Total Expenses	4,817,749	-	4,817,749	4,776,577
Increase/(Decrease) in Net Assets	977,813	298,898	1,276,711	(2,105,037)
Net Assets at Beginning of Year	1,619,568	449,018	2,068,586	4,173,623
Net Assets at End of Year	<u>\$ 2,597,381</u>	<u>\$ 747,916</u>	<u>\$ 3,345,297</u>	<u>\$2,068,586</u>

The accompanying notes are an integral part of these financial statements.

CALIFORNIA ASSOCIATION FOR BILINGUAL EDUCATION
STATEMENT OF FUNCTIONAL EXPENSES
FOR THE YEAR ENDED JUNE 30, 2021
(WITH SUMMARIZED TOTALS FOR THE YEAR ENDED JUNE 30, 2020)

The accompanying notes are an integral part of these financial statements.

CABE ANNUAL MEMBERSHIP REPORT

CALIFORNIA ASSOCIATION FOR BILINGUAL EDUCATION STATEMENT OF CASH FLOWS FOR THE YEARS ENDED JUNE 30, 2021 AND 2020

	2021	2020
Cash Flows from Operating Activities:		
Increase/(Decrease) in Net Assets	\$ 1,276,711	\$ (2,105,037)
Adjustment to Reconcile Change in Net Assets to Net Cash (Used In)/Provided By Operating Activities		
Depreciation	155,883	149,815
Forgiveness of PPP Loan	(459,370)	-
Realized and Unrealized Gain on Investments	(5,060)	(17,984)
Changes in:		
Accounts Receivable	(111,143)	511,926
Pledges Receivable	(50,000)	270,000
Inventories	-	1,968
Prepaid Expenses and Other Assets	24,951	13,943
Accounts Payable and Accrued Expenses	(404,540)	127,593
Deferred Revenue	(404,736)	8,105
Advances on Conditional Contributions	(1,442,068)	3,000,000
Net Cash (Used In)/Provided By Operating Activities	<u>(1,419,372)</u>	<u>1,960,329</u>
Cash Flows from Investing Activities:		
Purchase of Investments	-	(250,000)
Purchases of Building Improvements	-	(112,840)
Net Cash Used In Investing Activities	<u>-</u>	<u>(362,840)</u>
Cash flows from Financing activities:		
Proceeds from Loans and Notes	399,777	959,370
Principal Payment of Loans and Notes Payable	(90,528)	(82,751)
Net Cash Provided By Financing Activities	<u>309,249</u>	<u>876,619</u>
Net (Decrease)/Increase in Cash	(1,110,123)	2,474,108
Cash at Beginning of Year	<u>3,677,548</u>	<u>1,203,440</u>
Cash at End of Year	<u>\$ 2,567,425</u>	<u>\$ 3,677,548</u>

Cash paid for interest during the years ended June 30, 2021 and 2020 was \$110,421 and \$109,653 respectively.

The accompanying notes are an integral part of these financial statements.

CABE ANNUAL MEMBERSHIP REPORT

In Conclusion

CABE sustained and developed an even stronger presence as demonstrated by all activities conducted throughout 2020-21, even through the challenges of the pandemic. This presence is the result of active leadership that believes in long-range planning and strong convictions to equity and excellence. The leadership of the CABE Board of Directors and team members, a strong membership body, and a committed and talented CABE staff makes CABE an outstanding, strong organization poised for continued growth and expansion.

For more detailed programmatic and fiscal information, please contact CABE at info@gocabe.org

CABE ANNUAL MEMBERSHIP REPORT

Board of Directors • 2020-2021



Olivia Yahya
President
Retired

Dr. Barbara Flores
President-Elect
San Bernardino City USD

Elodia Ortega Lampkin
Vice President
Woodland Joint USD

Dr. Marlene Batista
Director of Legislative Affairs
Oxnard SD

Dr. Cristina Alfaro
Director of Secondary/IHE Affairs
San Diego State University

Raul Maldonado
Director of Financial Affairs
Palmdale SD

Marissa Lazo Necco
Director of Community Affairs
San Bernardino County Superintendent of Schools

Dr. Hugo Moreno
Director of Parent Relations
Mountain View USD

Rosa Armstrong
Director of Para-Professional Affairs
Palmdale SD

Annie Bichloan Doun
Region I Representative
San Joaquin COE

Alesha Moreno Ramirez
Region II Representative
Tulare COE

Dr. Carolina Serna
Region III Representative
Biola University

Mary Helen Ybarra
Region IV Representative
Corona Norco USD

Elena Esquer
Region V Representative
Palmdale SD

Mary T. Hernández, Legal Counsel
Garcia, Hernández & Sawhney, LLP

CABE ANNUAL MEMBERSHIP REPORT

Headquarters Staff— July 1, 2020- June 30, 2021

Jan Gustafson Corea

Chief Executive Office

Administrative Services

Aida Madison, Executive Assistant

Programs and Events

Delma Chwilinski, Director of Programs and Events

Vanessa Ruiz, Conference Specialist

Celina Corona, Conference Assistant

Irma Gallegos, Co-Coordinator, Registration

Elizabeth Samaniego, Co-Coordinator, Registration

Roxana Espinoza, Registration & A/R Assistant

Administration Services

Joshua Jauregui, Administrative Systems and Membership Manager

Ruth Navarrete, General Office & Exhibitor Support

Technology Support Services

Norma Rocha, Technology Coordinator

Martha Vidal Digital Media Technician

Larrie Carlos, Website & Multimedia

Toni Saucedo, Graphic Design Consultant

Senior Accounting Consultant

Yvette Chong-Coontz

Education Consultants

Laurie Nesralla, Education Consultant

Gloria Inzuza Franco, Consultant

Professional Development Service

Rubí Flores, Director of PDS

Anya Bobadillo, Professional Learning Specialist

Karmina Ramirez, PDS Marketing Assistant

Andrea González, PDS Assistant

PARENT AND FAMILY ENGAGEMENT

María Villa, Director, Parent & Family Engagement

Laura Díaz, Parent Specialist

Antoinette Hernández, Parent Specialist & Coach

Gricelda Pérez, Parent Specialist/Plaza Comunitaria

Karen Umeres, Administrative Support

Daniela Hernandez, Administrative Assistant

María Valencia, Parent Specialist

Yolanda Lucero, Part Time Parent Specialist

Imelda Martin, Part Time Parent Specialist

Martha Montufar, Part Time Parent Specialist

Brenda Romero, Part Time Parent Specialist

Advocacy

Martha Zaragoza Diaz, Legislative Lobbyist

CABE ANNUAL MEMBERSHIP REPORT



THE BENEFITS OF BEING BILINGUAL
GO BEYOND THE ABILITY TO
COMMUNICATE IN ANOTHER
LANGUAGE.

BILINGUALISM GIVES KIDS A
BROADER PERSPECTIVE OF THE WORLD

CABE ANNUAL MEMBERSHIP REPORT



CABE HEADQUARTERS

WWW.GOCABE.ORG

20888 AMAR ROAD, WALNUT, CA 91789
626-814-4441