

# Membership Team Update—June 2018



At CABE, we're CABE is growing and expanding services to clients, staff, consultants, partnerships, contracts, grants, resources, headquarters building, online and social media presence—and most importantly, membership. The Membership Team is exploring how we support and communicate with CABE members, chapters, and regions. We thank Stanley Lucero for the remarkable work he did as Membership Consultant. His responsibilities are now integrated into Joshua's and Laurie's work.

## Roxanna Espinoza *CABE Membership and Registration Assistant*

- performs data entry related to membership.
- processes receipts and payments related to chapter/affiliate business.
- assists with general membership inquiries.

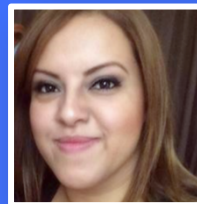
## Joshua Jauregui *CABE Administrative Systems/Membership Relations Manager*

- responds to chapter requests for support. (i.e. brochures, banners, rebates, membership questions, etc.)
- manages internal database related to the business side of membership.
- sends notices to chapter leaders regarding data and paperwork requirements.
- sets up and staffs the CABE membership and information tables/booths at the regional conferences.

## Laurie Nesrala *CABE Education Consultant and Membership Liaison*

- facilitates monthly communication between CABE chapters/affiliates and CABE Board and staff.
- gathers and disseminates news and updates regarding chapter, affiliate, local, regional, and state events, activities, and accomplishments.
- Supports new chapter development
- highlights chapter and membership news in the CABE Corner e-newsletter, on social media and in other CABE publications.
- works with regional representatives to recruit members to staff the conference booths and supports membership recruitment activities at these events.

## CABE Staff



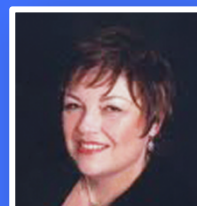
roxanna@gocabe.org  
626-814-4441, ext.204

Roxanna Espinoza



joshua@gocabe.org  
626-814-4441, ext.105

Joshua Jauregui



laurie@gocabe.org  
760-815-6622

Laurie Nesrala



cynthia@gocabe.org  
626-814-4441, ext.109

Cynthia Vásquez Pettit  
Deputy Director



jgcorea@gocabe.org  
626-814-4441, ext. 103

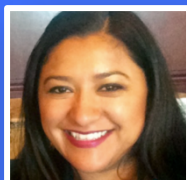
Jan Corea, CEO

## Regional Representatives — CABE Board of Directors



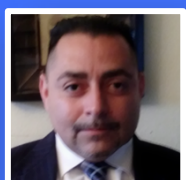
Region I

Dr. Annie BichLoan Duong



Region II

Esabel Cervantes



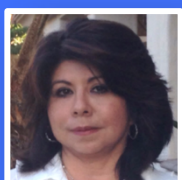
Region III

Liberato Figueroa



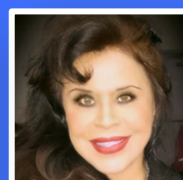
Region IV

Mary Helen Ybarra



Region V

Ana Donovan



Vice-President

Dr. Annie Rodríguez  
vp@gocabe.org

Region Representative Emails = region#@gocabe.org Example: region3@gocabe.org