



Sobrato Family Foundation

CABE



January 12, 2017





CABE VISION & STRATEGIC PLAN

BILITERACY
EDUCATIONAL EQUITY
21ST CENTURY SUCCESS FOR ALL

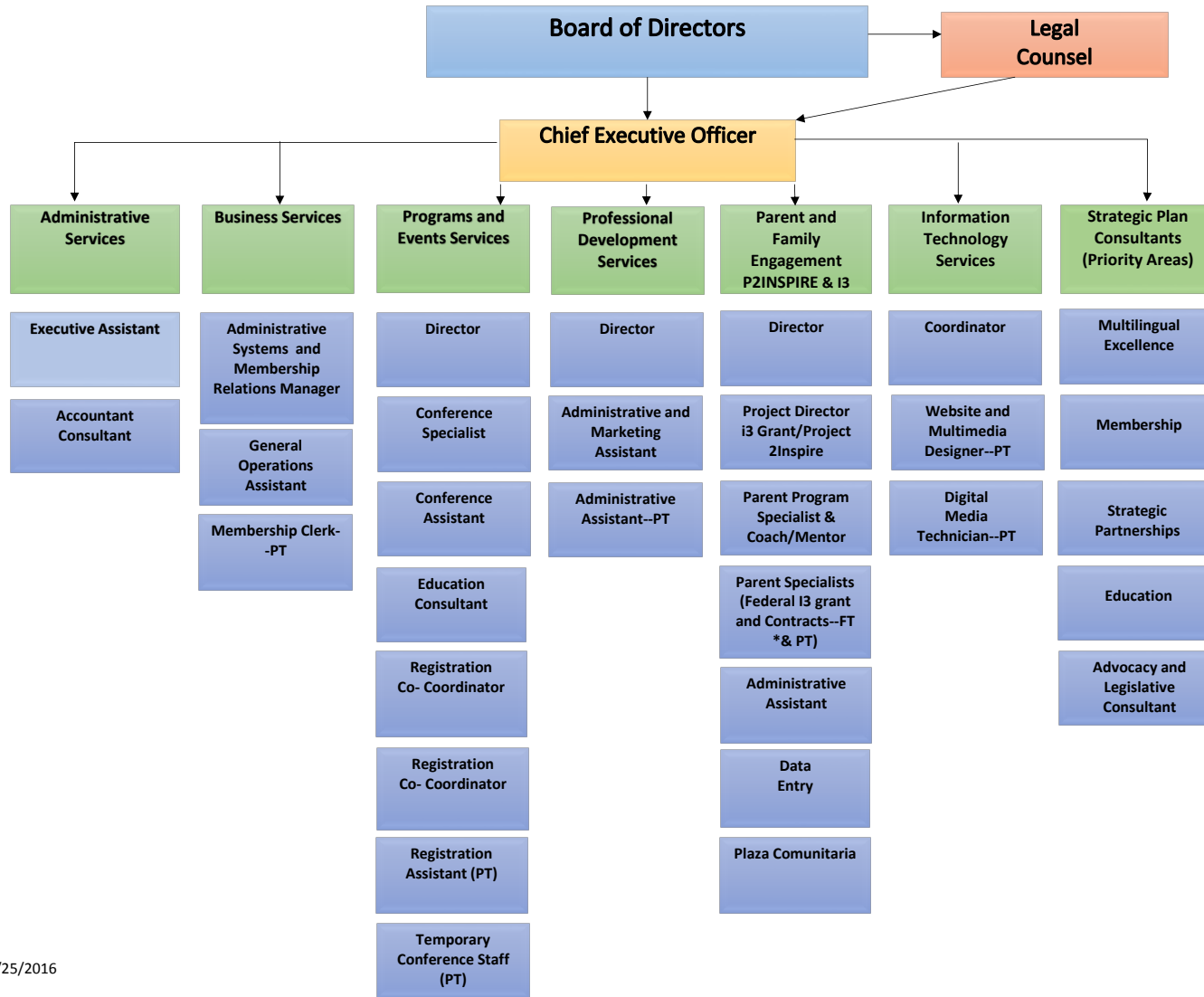


California Association for Bilingual Education

www.bilingualeducation.org



CABE Organizational Chart--2016-17



10/25/2016

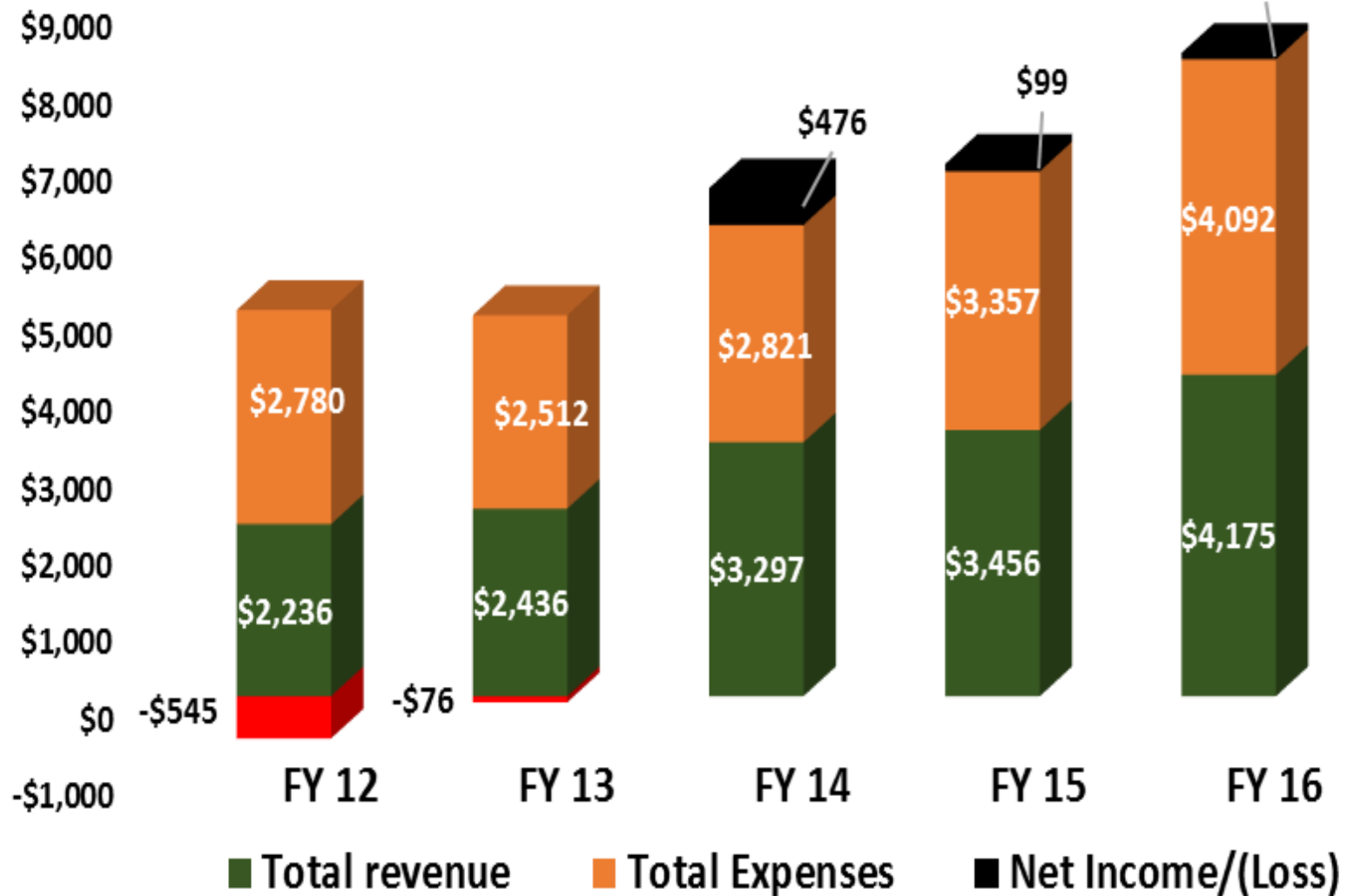
CABE—The Organization



Profit & Loss

FY 2012 - 2016 (5 years)

(in thousands)



+ Our History & Framing Over 4 Decades and Beyond....

Late 1970s, 1980s, 1990s

- Founding, Advocacy
- Conferences, Membership, Some Partners, Beginning technology.
- Volunteer based
- Prop 227
- Staff of 1-9

2000-2012

- Conferences and PD, Project INSPIRE (PIRC & P2I Grants and some contracts), Advocacy, Membership, Partners
- After School Program, Growing Technology, Impact Prop 227
- New Building
- Staff of 10-22

2012-Present

- CABE Compass—Strategic Plan
- Annual and Regional Conferences
- Parent Engagement and Leadership (I3, Other grants & P2I Contracts), Legislative Policy and Advocacy,
- Integrated Technology
- PDS—Professional Development Services
- Expanding Membership, Multilingual Excellence, Strategic Partnerships, Website and Social Media Expansion
- Prop 58
- Overgrowing Building...
- Team of 40 plus

2017-2027 What's next?

- Maintain as we are...OR
- Movement from the margin to the center of educational reform
- Strategic Areas of Focus
- Increased Infrastructure
- Increased Education Staff
- Growth—how far do we aim to grow?



PROJECTION OF GROWTH OVER 5-10 years



PROFESSIONAL DEVELOPMENT—

Highly Relevant
Language, Cross-Content,
Multicultural, Global

TRENDS

- Increased Annual Conference—20% growth annually over the last 3 years
- PDS—In the field PD 70% growth over past 3 years
- Binational/
International Focus

PARENT & FAMILY ENGAGEMENT

- Research based, evidence (I3 Grant)
- Expansion from So Cal to Silicon Valley to all CA
- Statewide Growth over three years—40%
- Plaza Comunitaria

GROWTH GOALS

-Advance Professional Development, Partnerships & Advocacy

- Bilingual Teacher Pipeline
- Administrator Professional Development—English Learners and Biliteracy
- Parent and Family Engagement—continued expansion statewide

+ PROJECTED GROWTH AREAS FOR NEXT 5-10 YEARS

Sobrato has dedicated \$10 M to support key EL work for the next text years. Californians Together, CEEL/LMU and SEAL are main partners

Potential \$750,000-\$800,000 over 2-3 years for CABE

- Education Professional Staff
- Family Engagement Director
- Search and purchase of new building
- Development of Satellite Office to reach Northern CA sector
- Expanded Technology—Web-based and social media
- Deputy Director

+ DISCUSSION



- What did you hear that is positive for CAFE?
- What questions do you have?
- What suggestions/recommendations do you have as we move forward with this discussion?